

Recombinant Human PKC epsilon/PKCE Protein (His Tag)

DIA • AN[®]
by Elabscience

Catalog Number:PKSH032964

Note: Centrifuge before opening to ensure complete recovery of vial contents.

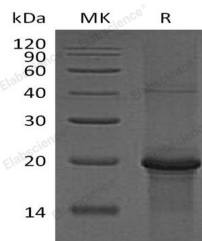
Description

Synonyms	Protein Kinase C Epsilon Type;nPKC-Epsilon;PRKCE;PKCE
Species	Human
Expression Host	E.coli
Sequence	Gln580-Pro737
Accession	Q02156
Calculated Molecular Weight	19.6 kDa
Observed molecular weight	20 kDa
Tag	C-His

Properties

Purity	> 90 % as determined by reducing SDS-PAGE.
Endotoxin	< 1.0 EU per µg of the protein as determined by the LAL method.
Storage	Store at < -20°C, stable for 6 months. Please minimize freeze-thaw cycles.
Shipping	This product is provided as liquid. It is shipped at frozen temperature with blue ice/gel packs. Upon receipt, store it immediately at < - 20°C.
Formulation	Supplied as a 0.2 µm filtered solution of 20mM PB, 150mM NaCl, 1mM DTT, pH 7.4.
Reconstitution	Not Applicable

Data



> 90 % as determined by reducing SDS-PAGE.

Background

Protein Kinase C Epsilon type is a member of the serine- and threonine-specific protein kinase family that can be activated by calcium and the second messenger diacylglycerol. Protein Kinase C Epsilon contains these domains: one AGC-kinase C-terminal domain; one C2 domain; one protein kinase domain and two phorbol-ester/DAG-type zinc fingers. Protein Kinase C Epsilon phosphorylate a variety of protein targets and has been identified to participate in diverse cellular signaling pathways. It has many different cellular functions; such as neuron channel activation; apoptosis; cardioprotection from ischemia; heat shock response; as well as insulin exocytosis. Protein Kinase C Epsilon also serves as the receptor for phorbol esters; a class of tumor promoters.

For Research Use Only

A Reliable Research Partner in Life Science and Medicine

Toll-free: 1-888-852-8623

Web: www.elabscience.com

Tel: 1-832-243-6086

Email: techsupport@elabscience.com

Fax: 1-832-243-6017