

# Recombinant Human PKC epsilon/PKCE Protein (His Tag)



Catalog Number:PKSH032964

**Note:** Centrifuge before opening to ensure complete recovery of vial contents.

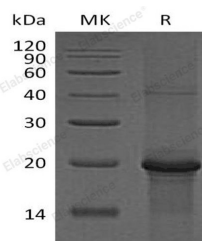
## Description

<b>Synonyms</b>	Protein Kinase C Epsilon Type;nPKC-Epsilon;PRKCE;PKCE
<b>Species</b>	Human
<b>Expression Host</b>	E.coli
<b>Sequence</b>	Gln580-Pro737
<b>Accession</b>	Q02156
<b>Calculated Molecular Weight</b>	19.6 kDa
<b>Observed molecular weight</b>	20 kDa
<b>Tag</b>	C-His

## Properties

<b>Purity</b>	> 90 % as determined by reducing SDS-PAGE.
<b>Endotoxin</b>	< 1.0 EU per µg of the protein as determined by the LAL method.
<b>Storage</b>	Store at < -20°C, stable for 6 months. Please minimize freeze-thaw cycles.
<b>Shipping</b>	This product is provided as liquid. It is shipped at frozen temperature with blue ice/gel packs. Upon receipt, store it immediately at < - 20°C.
<b>Formulation</b>	Supplied as a 0.2 µm filtered solution of 20mM PB, 150mM NaCl, 1mM DTT, pH 7.4.
<b>Reconstitution</b>	Not Applicable

## Data



> 90 % as determined by reducing SDS-PAGE.

## Background

Protein Kinase C Epsilon type is a member of the serine- and threonine-specific protein kinase family that can be activated by calcium and the second messenger diacylglycerol. Protein Kinase C Epsilon contains these domains: one AGC-kinase C-terminal domain; one C2 domain; one protein kinase domain and two phorbol-ester/DAG-type zinc fingers. Protein Kinase C Epsilon phosphorylate a variety of protein targets and has been identified to participate in diverse cellular signaling pathways. It has many different cellular functions; such as neuron channel activation; apoptosis; cardioprotection from ischemia; heat shock response; as well as insulin exocytosis. Protein Kinase C Epsilon also serves as the receptor for phorbol esters; a class of tumor promoters.

## For Research Use Only

A Reliable Research Partner in Life Science and Medicine

Toll-free: 1-888-852-8623

Web: [www.elabscience.com](http://www.elabscience.com)

Tel: 1-832-243-6086

Email: [techsupport@elabscience.com](mailto:techsupport@elabscience.com)

Fax: 1-832-243-6017