

Recombinant Human PPP1R1A Protein (His Tag)

Catalog Number:PKSH032968



Note: Centrifuge before opening to ensure complete recovery of vial contents.

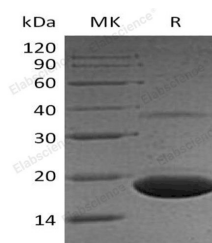
Description

Synonyms	Protein Phosphatase 1 Regulatory Subunit 1A;Protein Phosphatase Inhibitor 1;I-1;IPP-1;PPP1R1A;IPP1
Species	Human
Expression Host	E.coli
Sequence	Met 1-Val171
Accession	AAH22470.1
Calculated Molecular Weight	20.0 kDa
Observed molecular weight	18 kDa
Tag	C-His

Properties

Purity	> 90 % as determined by reducing SDS-PAGE.
Endotoxin	< 1.0 EU per µg of the protein as determined by the LAL method.
Storage	Store at < -20°C, stable for 6 months. Please minimize freeze-thaw cycles.
Shipping	This product is provided as liquid. It is shipped at frozen temperature with blue ice/gel packs. Upon receipt, store it immediately at < - 20°C.
Formulation	Supplied as a 0.2 µm filtered solution of 20mM Tris-HCl, 150mM NaCl, 1mM DTT, 50% Glycerol, pH 8.5.
Reconstitution	Not Applicable

Data



> 90 % as determined by reducing SDS-PAGE.

Background

Protein Phosphatase 1 Regulatory Subunit 1A (PPP1R1A) is an inhibitor of protein-phosphatase 1. PPP1R1A is a cellular regulator of eIF2 alpha phosphorylation. In hormonal control of glycogen metabolism, IPP-1 protein plays important function. Hormones can elevate intracellular cAMP level and elevate IPP-1 activity. PPP1R1A activation caused cAMP increase, cAMP control over proteins that are not directly phosphorylated by PKA following a rise in intracellular calcium. IPP-1 is inactivated by calcineurin (PP2B). Multiple domains in IPP-1 target cellular PP1 complexes.

For Research Use Only

A Reliable Research Partner in Life Science and Medicine

Toll-free: 1-888-852-8623

Web: www.elabscience.com

Tel: 1-832-243-6086

Email: techsupport@elabscience.com

Fax: 1-832-243-6017