

Recombinant Human PTPN6/SH-PTP1 Protein (His Tag)



Catalog Number:PKSH032975

Note: Centrifuge before opening to ensure complete recovery of vial contents.

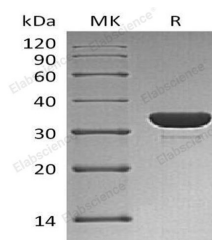
Description

Synonyms	Tyrosine-Protein Phosphatase Non-Receptor Type 6;Hematopoietic Cell Protein-Tyrosine Phosphatase;Protein-Tyrosine Phosphatase 1C;PTP-1C;Protein-Tyrosine Phosphatase SHP-1;SH-PTP1;PTPN6;HCP;PTP1C
Species	Human
Expression Host	E.coli
Sequence	Lys243-Ile541
Accession	AAH02523.1
Calculated Molecular Weight	35.4 kDa
Observed molecular weight	34 kDa
Tag	C-His

Properties

Purity	> 95 % as determined by reducing SDS-PAGE.
Endotoxin	< 1.0 EU per µg of the protein as determined by the LAL method.
Storage	Store at < -20°C, stable for 6 months. Please minimize freeze-thaw cycles.
Shipping	This product is provided as liquid. It is shipped at frozen temperature with blue ice/gel packs. Upon receipt, store it immediately at < - 20°C.
Formulation	Supplied as a 0.2 µm filtered solution of 25mM Tris-HCl, 2mM β-ME, 1mM EDTA, 1mM DTT, 20% Glycerol, pH 7.5.
Reconstitution	Not Applicable

Data



> 95 % as determined by reducing SDS-PAGE.

Background

Protein-Tyrosine Phosphatase 1C (PTP1C) belongs to the protein-tyrosine phosphatase family, which is known to be signaling molecules that regulate a variety of cellular processes including cell growth, differentiation, mitotic cycle, and oncogenic transformation. PTP1C is highly expressed in leukocyte cell type. It contains two SH2 domains and one tyrosine-protein phosphatase domain. The SH2 regions may interact with other cellular components to modulate its own phosphatase activity against interacting substrates. In addition, PTP1C also modulates signaling by tyrosine phosphorylated cell surface receptors.

For Research Use Only

A Reliable Research Partner in Life Science and Medicine

Toll-free: 1-888-852-8623

Web: www.elabscience.com

Tel: 1-832-243-6086

Email: techsupport@elabscience.com

Fax: 1-832-243-6017