

Recombinant Human PKLR Protein (His Tag)

Catalog Number:PKSH032984



Note: Centrifuge before opening to ensure complete recovery of vial contents.

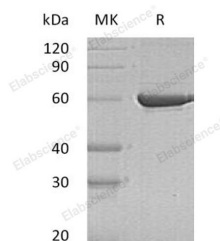
Description

| | |
|------------------------------------|--|
| Synonyms | Pyruvate Kinase Isozymes R/L;Pyruvate Kinase 1;R-Type/L-Type Pyruvate Kinase;Red Cell/Liver Pyruvate Kinase;PKLR;PK1;PKL |
| Species | Human |
| Expression Host | HEK293 Cells |
| Sequence | Met 1-Ser574 |
| Accession | P30613 |
| Calculated Molecular Weight | 62.9 kDa |
| Observed molecular weight | 58 kDa |
| Tag | C-His |

Properties

| | |
|-----------------------|---|
| Purity | > 95 % as determined by reducing SDS-PAGE. |
| Endotoxin | < 1.0 EU per µg of the protein as determined by the LAL method. |
| Storage | Store at < -20°C, stable for 6 months. Please minimize freeze-thaw cycles. |
| Shipping | This product is provided as liquid. It is shipped at frozen temperature with blue ice/gel packs. Upon receipt, store it immediately at < - 20°C. |
| Formulation | Supplied as a 0.2 µm filtered solution of 20mM Tris-HCl, 500mM NaCl, 5% Trehalose, 5% Mannitol, 0.02% Tween 80, 50% Glycerol, 1mM EDTA, 1mM DTT, pH8.0. |
| Reconstitution | Not Applicable |

Data



> 95 % as determined by reducing SDS-PAGE.

Background

Pyruvate Kinase Isozymes R/L (PKLR) belongs to the pyruvate kinase family, There are 4 isozymes of pyruvate kinase in mammals: L, R, M1 and M2. L type is major isozyme in the liver; R is found in red cells; M1 is the main form in muscle, heart and brain; M2 is found in early fetal tissues. PKLR exists as a homotetramer and catalyzes the production of phosphoenolpyruvate from pyruvate and ATP. Defects in PKLR are also the cause of pyruvate kinase deficiency of red cells, which is a frequent cause of hereditary non-spherocytic hemolytic anemia.

For Research Use Only

A Reliable Research Partner in Life Science and Medicine

Toll-free: 1-888-852-8623

Web: www.elabscience.com

Tel: 1-832-243-6086

Email: techsupport@elabscience.com

Fax: 1-832-243-6017