

Recombinant Human Ribonuclease A/RNASE1 Protein (His Tag)

DIA • AN[®]
by Elabscience

Catalog Number:PKSH033004

Note: Centrifuge before opening to ensure complete recovery of vial contents.

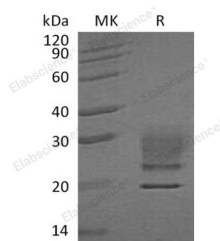
Description

Synonyms	Ribonuclease Pancreatic;HP-Rnase;RIB-1;RNase UpI-1;Ribonuclease 1;RNase 1;Ribonuclease A;RNase A;RNASE1;RIB1;RNS1
Species	Human
Expression Host	HEK293 Cells
Sequence	Lys29-Thr156
Accession	P07998
Calculated Molecular Weight	15.6 kDa
Observed molecular weight	17-33 kDa
Tag	C-His

Properties

Purity	> 95 % as determined by reducing SDS-PAGE.
Endotoxin	< 1.0 EU per µg of the protein as determined by the LAL method.
Storage	Store at < -20°C, stable for 6 months. Please minimize freeze-thaw cycles.
Shipping	This product is provided as liquid. It is shipped at frozen temperature with blue ice/gel packs. Upon receipt, store it immediately at < - 20°C.
Formulation	Supplied as a 0.2 µm filtered solution of 20mM PB, 150mM NaCl, 10% Glycerol, pH 7.4.
Reconstitution	Not Applicable

Data



> 95 % as determined by reducing SDS-PAGE.

Background

Ribonuclease Pancreatic is a secreted enzyme that belongs to the pancreatic ribonuclease family. RNASE1 is an endonuclease that cleaves internal phosphodiester RNA bonds on the 3'-side of pyrimidine bases. RNASE1 prefers poly(C) as a substrate and hydrolyzes 2',3'-cyclic nucleotides, with a pH optimum near 8.0. RNASE1 acts on single stranded and double stranded RNA.

For Research Use Only

A Reliable Research Partner in Life Science and Medicine

Toll-free: 1-888-852-8623

Web: www.elabscience.com

Tel: 1-832-243-6086

Email: techsupport@elabscience.com

Fax: 1-832-243-6017