

Recombinant Human S100P/S100E Protein (His Tag)

Catalog Number:PKSH033009



Note: Centrifuge before opening to ensure complete recovery of vial contents.

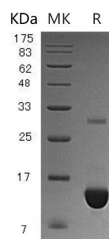
Description

Synonyms	Protein S100-P;Protein S100-E;S100 Calcium-Binding Protein P;S100P;S100E;MIG9
Species	Human
Expression Host	E.coli
Sequence	Met 1-Lys95
Accession	P25815
Calculated Molecular Weight	12.6 kDa
Observed molecular weight	12 kDa
Tag	N-His

Properties

Purity	> 95 % as determined by reducing SDS-PAGE.
Endotoxin	< 1.0 EU per μ g of the protein as determined by the LAL method.
Storage	Store at < -20°C, stable for 6 months. Please minimize freeze-thaw cycles.
Shipping	This product is provided as liquid. It is shipped at frozen temperature with blue ice/gel packs. Upon receipt, store it immediately at < - 20°C.
Formulation	Supplied as a 0.2 μ m filtered solution of 20mM Tris-HCl, 1mM DTT, 100mM NaCl, 20% Glycerol, pH 8.0.
Reconstitution	Not Applicable

Data



> 95 % as determined by reducing SDS-PAGE.

Background

Protein S100-P (S100P) belongs to the S100 family of Calcium-Binding Proteins. S100P is 95 amino acids in length and it contains 2 EF-Hand Calcium-Binding Motifs. The EF-Hand Motif binds calcium; which likely alters molecular conformation. S100 proteins are localized in the cytoplasm and/or nucleus of a wide range of cells and it is involved in the regulation of a number of cellular processes such as cell cycle progression and differentiation. In addition to binding Ca; S100P also binds Zn and Mg; and may play a role in the etiology of prostate cancer.

For Research Use Only

A Reliable Research Partner in Life Science and Medicine

Toll-free: 1-888-852-8623

Web: www.elabscience.com

Tel: 1-832-243-6086

Email: techsupport@elabscience.com

Fax: 1-832-243-6017