

# Recombinant Human SCLY Protein (His Tag)

Catalog Number:PKSH033015



**Note:** Centrifuge before opening to ensure complete recovery of vial contents.

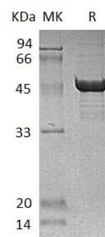
## Description

<b>Synonyms</b>	Selenocysteine Lyase;hSCL;SCLY;SCL
<b>Species</b>	Human
<b>Expression Host</b>	E.coli
<b>Sequence</b>	Met 1-Ala445
<b>Accession</b>	Q96I15
<b>Calculated Molecular Weight</b>	50.3 kDa
<b>Observed molecular weight</b>	50-55 kDa
<b>Tag</b>	N-His

## Properties

<b>Purity</b>	> 95 % as determined by reducing SDS-PAGE.
<b>Endotoxin</b>	< 1.0 EU per µg of the protein as determined by the LAL method.
<b>Storage</b>	Store at < -20°C, stable for 6 months. Please minimize freeze-thaw cycles.
<b>Shipping</b>	This product is provided as liquid. It is shipped at frozen temperature with blue ice/gel packs. Upon receipt, store it immediately at < - 20°C.
<b>Formulation</b>	Supplied as a 0.2 µm filtered solution of 20mM Tris-HCl, 150mM NaCl, pH 8.0.
<b>Reconstitution</b>	Not Applicable

## Data



> 95 % as determined by reducing SDS-PAGE.

## Background

Selenocysteine Lyase belongs to the class-V pyridoxal-phosphate-dependent aminotransferase family. Selenocysteine Lyase exists as a homodimer in the cytosol. In the brain, Selenocysteine Lyase is an enzyme that putatively salvages Sec and recycles the selenium for selenoprotein translation. Selenocysteine Lyase catalyzes the decomposition of L-selenocysteine to L-alanine and elemental selenium. Selenocysteine Lyase can be up-regulated In acute glomerulonephritis, it can also be regulated by JUN/AP-1.

## For Research Use Only

A Reliable Research Partner in Life Science and Medicine

Toll-free: 1-888-852-8623

Web: [www.elabscience.com](http://www.elabscience.com)

Tel: 1-832-243-6086

Email: [techsupport@elabscience.com](mailto:techsupport@elabscience.com)

Fax: 1-832-243-6017