

Recombinant Human SENP2 Protein

Catalog No. PKSH033026

Note: Centrifuge before opening to ensure complete recovery of vial contents.

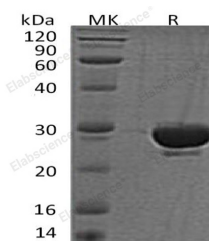
Description

Synonyms	Sentrin-specific protease 2;Axam2;SMT3-specific isopeptidase 2;Sentrin/SUMO-specific protease SENP2;KIAA1331;SENP2.
Species	Human
Expression Host	E.coli
Sequence	Asp363-Leu589
Accession	Q9HC62
Calculated Molecular Weight	26.8 kDa
Observed molecular weight	29 kDa
Tag	None
Bioactivity	Not validated for activity

Properties

Purity	> 95 % as determined by reducing SDS-PAGE.
Endotoxin	< 1.0 EU per µg of the protein as determined by the LAL method.
Storage	Store at < -20°C, stable for 6 months. Please minimize freeze-thaw cycles.
Shipping	This product is provided as liquid. It is shipped at frozen temperature with blue ice/gel packs. Upon receipt, store it immediately at < -20°C.
Formulation	Supplied as a 0.2 µm filtered solution of 50mM HEPES,5% Glycerol, pH 7.4.
Reconstitution	Not Applicable

Data



> 95 % as determined by reducing SDS-PAGE.

Background

SENP2 is an enzyme that belongs to the peptidase C48 family. SENP2 is a protease that catalyzes two essential functions in the SUMO pathway: processing of full-length SUMO1, SUMO2 and SUMO3 to their mature forms and deconjugation of SUMO1, SUMO2 and SUMO3 from targeted proteins. SUMO1 is a small ubiquitin-like protein that can be covalently conjugated to other proteins. It has been implicated as a down-regulator of CTNNB1 levels and may therefore be a modulator of the Wnt pathway.

For Research Use Only