

Recombinant Human SENP7 Protein

Catalog No. PKSH033027

Note: Centrifuge before opening to ensure complete recovery of vial contents.

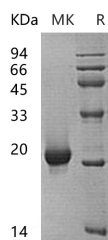
Description

Synonyms	Sentrin-Specific Protease 7;SUMO-1-Specific Protease 2;Sentrin/SUMO-Specific Protease SENP7;SENP7;KIAA1707;SSP2;SUSP2
Species	Human
Expression Host	E.coli
Sequence	Met695-Ala864
Accession	Q9BQF6
Calculated Molecular Weight	19.8 kDa
Observed molecular weight	22 kDa
Tag	None
Bioactivity	Not validated for activity

Properties

Purity	> 95 % as determined by reducing SDS-PAGE.
Endotoxin	< 1.0 EU per µg of the protein as determined by the LAL method.
Storage	Store at < -20°C, stable for 6 months. Please minimize freeze-thaw cycles.
Shipping	This product is provided as liquid. It is shipped at frozen temperature with blue ice/gel packs. Upon receipt, store it immediately at < -20°C.
Formulation	Supplied as a 0.2 µm filtered solution of 20mM HEPES, 5% Glycerol, pH 7.4.
Reconstitution	Not Applicable

Data



> 95 % as determined by reducing SDS-PAGE.

Background

Sentrin-Specific Protease 7 (SENP7) acts as a SUMO-2/3-specific protease. SENP7 is likely to regulate the metabolism of poly-SUMO-2/3 rather than SUMO-1 conjugation in vivo. SENP7 has a restricted substrate specificity, and displaying paralogue-specific isopeptidase activity. The C-terminal catalytic domain of SENP7 depolymerized poly-SUMO-2 chains but does not have activity against poly-SUMO-1 chains. SENP7 also had isopeptidase activity against di-SUMO-2- and SUMO-2-modified RanGAP1 (Ran GTPase-activating protein 1) but had limited activity against SUMO-1-modified

For Research Use Only

RanGAP1.

For Research Use Only

Toll-free: 1-888-852-8623

Web: www.elabscience.com

Tel: 1-832-243-6086

Email: techsupport@elabscience.com

Fax: 1-832-243-6017