

Recombinant Human SerpinA10/SERPINA10 Protein (His Tag)



Catalog Number:PKSH033031

Note: Centrifuge before opening to ensure complete recovery of vial contents.

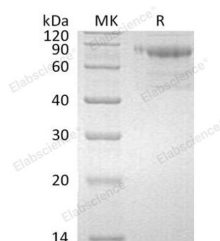
Description

Synonyms	Protein Z-Dependent Protease Inhibitor;PZ-Dependent Protease Inhibitor;PZI;Serpin A10;SERPINA10;ZPI
Species	Human
Expression Host	HEK293 Cells
Sequence	Leu22-Leu444
Accession	Q9UK55
Calculated Molecular Weight	49.5 kDa
Observed molecular weight	55-80 kDa
Tag	C-His

Properties

Purity	> 95 % as determined by reducing SDS-PAGE.
Endotoxin	< 1.0 EU per µg of the protein as determined by the LAL method.
Storage	Generally, lyophilized proteins are stable for up to 12 months when stored at -20 to -80°C. Reconstituted protein solution can be stored at 4-8°C for 2-7 days. Aliquots of reconstituted samples are stable at < -20°C for 3 months.
Shipping	This product is provided as lyophilized powder which is shipped with ice packs.
Formulation	Lyophilized from a 0.2 µm filtered solution of 20mM PB, 150mM NaCl, 1mM CaCl ₂ , pH 7.4. Normally 5 % - 8 % trehalose, mannitol and 0.01% Tween80 are added as protectants before lyophilization. Please refer to the specific buffer informat
Reconstitution	Please refer to the printed manual for detailed information.

Data



> 95 % as determined by reducing SDS-PAGE.

Background

Serpin A10 is a secreted protein that belongs to the serpin family. It is predominantly expressed in the liver and secreted in the plasma. Its phosphorylation sites are present in the extracellular medium. It inhibits factors Xa and XIa of the coagulation cascade in the presence of protein Z, calcium, and phospholipid. Mutations in SERPINA10 are associated with venous thrombosis.

For Research Use Only

A Reliable Research Partner in Life Science and Medicine

Toll-free: 1-888-852-8623

Web: www.elabscience.com

Tel: 1-832-243-6086

Email: techsupport@elabscience.com

Fax: 1-832-243-6017