

Recombinant Human SerpinA3/AACT Protein (His Tag)

Catalog Number:PKSH033032



Note: Centrifuge before opening to ensure complete recovery of vial contents.

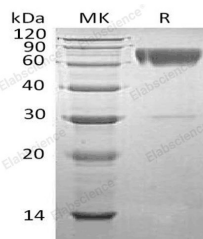
Description

Synonyms	Alpha-1-Antichymotrypsin;ACT;Cell Growth-Inhibiting Gene 24/25 Protein;Serpin A3;SERPINA3;AACT;GIG24;GIG25;MGC88254;SERPINA3
Species	Human
Expression Host	HEK293 Cells
Sequence	His24-Ala423(Lys267Arg)
Accession	P01011
Calculated Molecular Weight	46.3 kDa
Observed molecular weight	50-80 kDa
Tag	C-His

Properties

Purity	> 90 % as determined by reducing SDS-PAGE.
Endotoxin	< 1.0 EU per µg of the protein as determined by the LAL method.
Storage	Generally, lyophilized proteins are stable for up to 12 months when stored at -20 to -80°C. Reconstituted protein solution can be stored at 4-8°C for 2-7 days. Aliquots of reconstituted samples are stable at < -20°C for 3 months.
Shipping	This product is provided as lyophilized powder which is shipped with ice packs.
Formulation	Lyophilized from a 0.2 µm filtered solution of 20mM HEPES, 150mM NaCl, pH 7.5. Normally 5 % - 8 % trehalose, mannitol and 0.01% Tween80 are added as protectants before lyophilization. Please refer to the specific buffer information in the printed
Reconstitution	Please refer to the printed manual for detailed information.

Data



> 90 % as determined by reducing SDS-PAGE.

Background

Serpin A3 belongs to the Serpin superfamily of serine protease inhibitors. Serpin A3 has been shown to inhibit some serine proteases, such as neutrophil cathepsin G and mast cell chymase. Serpin A3 is synthesized initially in the liver and secreted in plasma. Serpin A3 has been found in the amyloid plaques from the hippocampus of Alzheimer disease brains. In addition to, Serpin A3 is associated with liver disease and Parkinson disease and chronic obstructive pulmonary disease.

For Research Use Only

A Reliable Research Partner in Life Science and Medicine

Toll-free: 1-888-852-8623

Web: www.elabscience.com

Tel: 1-832-243-6086

Email: techsupport@elabscience.com

Fax: 1-832-243-6017