

Recombinant Human SerpinB3/SCCA1 Protein (E.coli, His Tag)



Catalog Number:PKSH033038

Note: Centrifuge before opening to ensure complete recovery of vial contents.

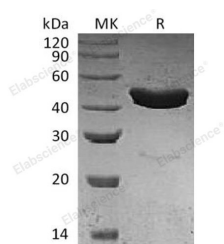
Description

Synonyms	Serpin B3;Protein T4-A;Squamous cell carcinoma antigen 1;SCCA-1;serine (or cysteine) proteinase inhibitor;clade B (ovalbumin);member 3;serpin peptidase inhibitor;clade B (ovalbumin);member 3;Squamous cell carcinoma antigen 1;T4-A;SCCA1;HsT1196;SCC;SCCA-1;SCCA-PD
Species	Human
Expression Host	E.coli
Sequence	Met 1-Pro390
Accession	P29508
Calculated Molecular Weight	46.0 kDa
Observed molecular weight	40-55 kDa
Tag	N-His

Properties

Purity	> 95 % as determined by reducing SDS-PAGE.
Endotoxin	< 1.0 EU per µg of the protein as determined by the LAL method.
Storage	Generally, lyophilized proteins are stable for up to 12 months when stored at -20 to -80°C. Reconstituted protein solution can be stored at 4-8°C for 2-7 days. Aliquots of reconstituted samples are stable at < -20°C for 3 months.
Shipping	This product is provided as lyophilized powder which is shipped with ice packs.
Formulation	Lyophilized from a 0.2 µm filtered solution of PBS, pH 7.4. Normally 5 % - 8 % trehalose, mannitol and 0.01% Tween80 are added as protectants before lyophilization. Please refer to the specific buffer information in the printed manual.
Reconstitution	Please refer to the printed manual for detailed information.

Data



> 95 % as determined by reducing SDS-PAGE.

Background

Serpin B3, also known as squamous cell carcinoma antigen-1 (SCCA-1), is a member of the serpin superfamily of serine protease inhibitors. Serpin B3 belongs to the subgroup ovalbumin-related serpins which are involved in the regulation of apoptosis, inflammation, angiogenesis and embryogenesis. It may act as a papain-like cysteine protease inhibitor to modulate the host immune response against tumor cells. It also functions as an inhibitor of UV-induced apoptosis via suppression of the activity of c-Jun NH(2)-terminal kinase (JNK1).

For Research Use Only

A Reliable Research Partner in Life Science and Medicine

Toll-free: 1-888-852-8623

Web: www.elabscience.com

Tel: 1-832-243-6086

Email: techsupport@elabscience.com

Fax: 1-832-243-6017