

# Recombinant Human SerpinB6/PI-6 Protein (His&Trx Tag)

**DIA • AN**<sup>®</sup>  
by Elabscience

Catalog Number:PKSH033040

**Note:** Centrifuge before opening to ensure complete recovery of vial contents.

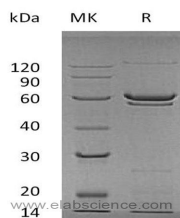
## Description

<b>Synonyms</b>	Serpin B6; Cytoplasmic Antiproteinase; CAP; Peptidase Inhibitor 6; PI-6; Placental Thrombin Inhibitor; SERPINB6; PI6; PTI;PI-6;PTI;RP1-90J20.6;SPI3
<b>Species</b>	Human
<b>Expression Host</b>	E.coli
<b>Sequence</b>	Met 1-Pro376
<b>Accession</b>	P35237
<b>Calculated Molecular Weight</b>	60.7 kDa
<b>Observed molecular weight</b>	60 kDa
<b>Tag</b>	N-Trx & His

## Properties

<b>Purity</b>	> 90 % as determined by reducing SDS-PAGE.
<b>Endotoxin</b>	< 1.0 EU per µg as determined by the LAL method.
<b>Storage</b>	Lyophilized proteins are stable for up to 12 months when stored at -20 to -80°C. Reconstituted protein solution can be stored at 4-8°C for 2-7 days. Aliquots of reconstituted samples are stable at < -20°C for 3 months.
<b>Shipping</b>	This product is provided as lyophilized powder which is shipped with ice packs.
<b>Formulation</b>	Lyophilized from a 0.2 µm filtered solution of 20mM PB, 150mM NaCl, pH 7.2.
<b>Reconstitution</b>	Please refer to the printed manual for detailed information.

## Data



## Background

Serpin B6 belongs to the serpin family. Serpin B6 localizes to the cytoplasm. Serpin B6 is expressed in many tissues, abundantly by mast cells in different tissues and mastocytoma lesions. Serpin B6 may be involved in the regulation of serine proteinases present in the brain or extravasated from the blood. In addition, Serpin B6 may play an important role in the inner ear in the protection against leakage of lysosomal content during stress and loss of this protection results in cell death and sensorineural hearing loss.

## For Research Use Only

A Reliable Research Partner in Life Science and Medicine

Toll-free: 1-888-852-8623

Web: [www.elabscience.com](http://www.elabscience.com)

Tel: 1-832-243-6086

Email: [techsupport@elabscience.com](mailto:techsupport@elabscience.com)

Fax: 1-832-243-6017