

Recombinant Human SerpinF1/PEDF Protein (His Tag)

Catalog No. PKSH033042

Note: Centrifuge before opening to ensure complete recovery of vial contents.

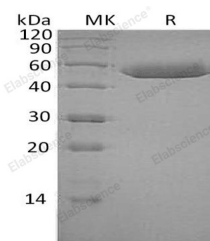
Description

Synonyms	Pigment Epithelium-Derived Factor;PEDF;Cell Proliferation-Inducing Gene 35 Protein;EPC-1;Serpin F1;SERPINF1;PEDF;OI12;OI6;PEDF;PIG35
Species	Human
Expression Host	HEK293 Cells
Sequence	Gln20-Pro418
Accession	P36955
Calculated Molecular Weight	45.4 kDa
Observed molecular weight	50 kDa
Tag	C-His
Bioactivity	Not validated for activity

Properties

Purity	> 95 % as determined by reducing SDS-PAGE.
Endotoxin	< 1.0 EU per µg of the protein as determined by the LAL method.
Storage	Generally, lyophilized proteins are stable for up to 12 months when stored at -20 to -80°C. Reconstituted protein solution can be stored at 4-8°C for 2-7 days. Aliquots of reconstituted samples are stable at < -20°C for 3 months.
Shipping	This product is provided as lyophilized powder which is shipped with ice packs.
Formulation	Lyophilized from a 0.2 µm filtered solution of 20mM Tris-HCl, 150mM NaCl, pH 8.0. Normally 5% - 8% trehalose, mannitol and 0.01% Tween 80 are added as protectants before lyophilization. Please refer to the specific buffer information in the printed manual.
Reconstitution	Please refer to the printed manual for detailed information.

Data



> 95 % as determined by reducing SDS-PAGE.

Background

For Research Use Only

Serpin F1 is a secreted glycoprotein that belongs to the noninhibitory serpin. It has an alpha/beta core serine-protease inhibitor domain, three major beta-sheets, and ten alpha-helices. As protease inhibitors, serpins have an array of functions including regulating blood clotting, the complement pathway, extracellular matrix remodeling, and cell motility. They are also involved in activities that extend beyond their ability to inhibit proteases. For instance, they may also regulate blood pressure, angiogenesis, or act as storage/transport proteins. Serpin F1 is a new promising approach for the treatment of osteosarcoma and has been described as a natural angiogenesis inhibitor with neurotrophic and immune-modulation properties. The human serpin superfamily consists of at least 35 members that target not only serine proteases, but also selected cysteine proteases and non-protease proteins. Levels of the natural ocular anti-angiogenic factor SentrinF1 (PEDF) is associated with proliferative retinopathy.