

# Recombinant Human SerpinH1/SERPINH1 Protein (His Tag)



Catalog Number:PKSH033044

**Note:** Centrifuge before opening to ensure complete recovery of vial contents.

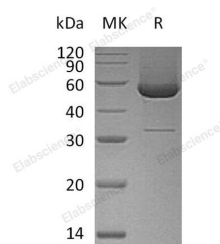
## Description

<b>Synonyms</b>	Serpin H1;47 kDa Heat Shock Protein;Arsenic-Transactivated Protein 3;AsTP3;Cell Proliferation-Inducing Gene 14 Protein;Collagen-Binding Protein;Colligin;Rheumatoid Arthritis-Related Antigen RA-A47;SERPINH1;CBP1;CBP2;HSP47;SERPINH2
<b>Species</b>	Human
<b>Expression Host</b>	HEK293 Cells
<b>Sequence</b>	Ala19-Leu418
<b>Accession</b>	P50454
<b>Calculated Molecular Weight</b>	45.5 kDa
<b>Observed molecular weight</b>	51 kDa
<b>Tag</b>	C-His

## Properties

<b>Purity</b>	> 90 % as determined by reducing SDS-PAGE.
<b>Endotoxin</b>	< 1.0 EU per µg of the protein as determined by the LAL method.
<b>Storage</b>	Generally, lyophilized proteins are stable for up to 12 months when stored at -20 to -80°C. Reconstituted protein solution can be stored at 4-8°C for 2-7 days. Aliquots of reconstituted samples are stable at < -20°C for 3 months.
<b>Shipping</b>	This product is provided as lyophilized powder which is shipped with ice packs.
<b>Formulation</b>	Lyophilized from a 0.2 µm filtered solution of PBS, pH 7.4. Normally 5 % - 8 % trehalose, mannitol and 0.01% Tween80 are added as protectants before lyophilization. Please refer to the specific buffer information in the printed manual.
<b>Reconstitution</b>	Please refer to the printed manual for detailed information.

## Data



> 90 % as determined by reducing SDS-PAGE.

## Background

Serpin H1 is a serine proteinase inhibitors Which belongs to the serpin family. Serpin H1 is induced by heat shock. Serpin H1 localizes to the endoplasmic reticulum lumen and binds specifically to collagen. Thus it is thought to be a molecular chaperone involved in the maturation of collagen molecules. Autoantibodies to this protein have been found in patients with rheumatoid arthritis. Serpin H1 may be a marker for cancer and nucleotide polymorphisms in this gene may be associated with preterm birth caused by preterm premature rupture of membranes.

## For Research Use Only

A Reliable Research Partner in Life Science and Medicine

Toll-free: 1-888-852-8623

Web: [www.elabscience.com](http://www.elabscience.com)

Tel: 1-832-243-6086

Email: [techsupport@elabscience.com](mailto:techsupport@elabscience.com)

Fax: 1-832-243-6017