

Recombinant Human SIGLEC3/CD33 Protein (Fc & His Tag)



Catalog Number:PKSH033054

Note: Centrifuge before opening to ensure complete recovery of vial contents.

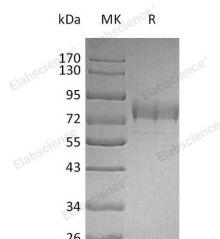
Description

Synonyms	Myeloid Cell Surface Antigen CD33;Sialic Acid-Binding Ig-Like Lectin 3;Siglec-3;gp67;CD33;SIGLEC3
Species	Human
Expression Host	HEK293 Cells
Sequence	Asp18-His259
Accession	AAH28152.1
Calculated Molecular Weight	55.0 kDa
Observed molecular weight	80 kDa
Tag	C-Fc-His

Properties

Purity	> 95 % as determined by reducing SDS-PAGE.
Endotoxin	< 1.0 EU per µg of the protein as determined by the LAL method.
Storage	Generally, lyophilized proteins are stable for up to 12 months when stored at -20 to -80°C. Reconstituted protein solution can be stored at 4-8°C for 2-7 days. Aliquots of reconstituted samples are stable at < -20°C for 3 months.
Shipping	This product is provided as lyophilized powder which is shipped with ice packs.
Formulation	Lyophilized from a 0.2 µm filtered solution of 20mM PB, 150mM NaCl, 2mM EDTA, pH 7.2. Normally 5 % - 8 % trehalose, mannitol and 0.01% Tween80 are added as protectants before lyophilization. Please refer to the specific buffer information in the p
Reconstitution	Please refer to the printed manual for detailed information.

Data



> 95 % as determined by reducing SDS-PAGE.

Background

CD33 is a type I Lectin belonging to the Ig superfamily. CD33 contains an N terminal Ig like V type domain, which mediates sialic acid binding, followed by one Ig like C2 type domain, a transmembrane region and a cytoplasmic tail containing two conserved immunoreceptor tyrosine based inhibition motifs (ITIMs). Eleven human Siglecs have been characterized. Siglecs 5 to 11 share a high degree of sequence similarity with CD33/Siglec3 both in their extracellular and intracellular regions. They are collectively referred to as CD33 related Siglecs. CD33 related Siglecs have differential expression pattern within the hematopoietic system. They are involved in the regulation of cellular activation within the

For Research Use Only

A Reliable Research Partner in Life Science and Medicine

Toll-free: 1-888-852-8623

Web: www.elabscience.com

Tel: 1-832-243-6086

Email: techsupport@elabscience.com

Fax: 1-832-243-6017

Recombinant Human SIGLEC3/CD33 Protein (Fc & His Tag)



Catalog Number:PKSH033054

immune system. Siglec 3 expression is restricted to cells of myelomonocytic lineage. Siglec3 recruits SHP1 and SHP2 to its ITIMs upon phosphorylation.

For Research Use Only

A Reliable Research Partner in Life Science and Medicine

Toll-free: 1-888-852-8623

Tel: 1-832-243-6086

Fax: 1-832-243-6017

Web: www.elabscience.com

Email: techsupport@elabscience.com