

Recombinant Human SLAMF8 Protein (His Tag)

Catalog Number:PKSH033064



Note: Centrifuge before opening to ensure complete recovery of vial contents.

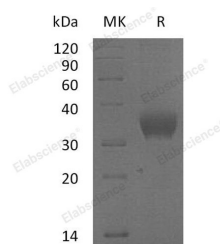
Description

Synonyms	SLAM family member 8;B-lymphocyte activator macrophage expressed;BCM-like membrane protein;CD353;SLAMF8;BLAME
Species	Human
Expression Host	HEK293 Cells
Sequence	Ala23-Asp233
Accession	Q9P0V8
Calculated Molecular Weight	26.2 kDa
Observed molecular weight	34 kDa
Tag	C-His

Properties

Purity	> 95 % as determined by reducing SDS-PAGE.
Endotoxin	< 1.0 EU per µg of the protein as determined by the LAL method.
Storage	Generally, lyophilized proteins are stable for up to 12 months when stored at -20 to -80°C. Reconstituted protein solution can be stored at 4-8°C for 2-7 days. Aliquots of reconstituted samples are stable at < -20°C for 3 months.
Shipping	This product is provided as lyophilized powder which is shipped with ice packs.
Formulation	Lyophilized from a 0.2 µm filtered solution of PBS, pH 7.4. Normally 5 % - 8 % trehalose, mannitol and 0.01% Tween80 are added as protectants before lyophilization. Please refer to the specific buffer information in the printed manual.
Reconstitution	Please refer to the printed manual for detailed information.

Data



> 95 % as determined by reducing SDS-PAGE.

Background

SLAM family member 8 (SLAMF8) is a single-pass type I membrane protein and contains 1 Ig-like C2-type domain. SLAMF8 is a member of the CD2 family of cell surface proteins involved in lymphocyte activation. These proteins are characterized by Ig domains and studies of a similar protein in mouse suggest that it may function during B cell lineage commitment. SLAMF8 is expressed in lymph node, spleen, thymus and bone marrow. It may play a role in B-lineage commitment and/or modulation of signaling through the B-cell receptor.

For Research Use Only

A Reliable Research Partner in Life Science and Medicine

Toll-free: 1-888-852-8623

Web: www.elabscience.com

Tel: 1-832-243-6086

Email: techsupport@elabscience.com

Fax: 1-832-243-6017