

Recombinant Human SUMO3/SMT3A Protein (aa 2-92, His Tag)

DIA • AN[®]
by Elabscience

Catalog Number:PKSH033069

Note: Centrifuge before opening to ensure complete recovery of vial contents.

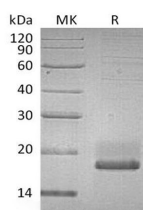
Description

Synonyms	Small ubiquitin-related modifier 3;SUMO-3;SMT3 homolog 1;SUMO-2;Ubiquitin-like protein SMT3A;Smt3A
Species	Human
Expression Host	HEK293 Cells
Sequence	Ser2-Gly92
Accession	P55854
Calculated Molecular Weight	11.1 kDa
Observed molecular weight	20 kDa
Tag	C-His

Properties

Purity	> 95 % as determined by reducing SDS-PAGE.
Endotoxin	< 1.0 EU per µg of the protein as determined by the LAL method.
Storage	Generally, lyophilized proteins are stable for up to 12 months when stored at -20 to -80°C. Reconstituted protein solution can be stored at 4-8°C for 2-7 days. Aliquots of reconstituted samples are stable at < -20°C for 3 months.
Shipping	This product is provided as lyophilized powder which is shipped with ice packs.
Formulation	Lyophilized from a 0.2 µm filtered solution of PBS, pH 7.4. Normally 5 % - 8 % trehalose, mannitol and 0.01% Tween80 are added as protectants before lyophilization. Please refer to the specific buffer information in the printed manual.
Reconstitution	Please refer to the printed manual for detailed information.

Data



> 95 % as determined by reducing SDS-PAGE.

Background

Small ubiquitin-like modifier (SUMO); also known as SUMO homologue and SMT3; is a member of the superfamily of ubiquitin-like polypeptides that become covalently attached to various intracellular target proteins as a way to alter their function; location; and/or half-life. Small ubiquitin-like modifiers include SUMO1; SUMO2; SUMO3; and SUMO4. Except for SUMO4; all other SUMOs are ubiquitously expressed; including in the brain. In human; SUMO2 and SUMO3 are two highly homologous proteins; collectively called SUMO2/3. Several studies suggest that SUMO3 are associated with pathogenesis in several neurological diseases; including Alzheimer's disease; Parkinson's disease; and cerebral ischemia/stroke.

For Research Use Only

A Reliable Research Partner in Life Science and Medicine

Toll-free: 1-888-852-8623

Web: www.elabscience.com

Tel: 1-832-243-6086

Email: techsupport@elabscience.com

Fax: 1-832-243-6017