

Recombinant Human SOD2/Mn-SOD Protein (His Tag, Human Cells)

Catalog Number:PKSH033071

Note: Centrifuge before opening to ensure complete recovery of vial contents.

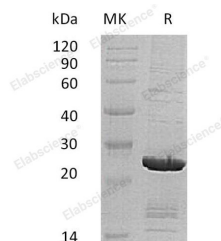
Description

Synonyms	Superoxide Dismutase [Mn] Mitochondrial;SOD2
Species	Human
Expression Host	HEK293 Cells
Sequence	Lys25-Lys222
Accession	P04179
Calculated Molecular Weight	23.2 kDa
Observed molecular weight	25 kDa
Tag	C-His

Properties

Purity	> 95 % as determined by reducing SDS-PAGE.
Endotoxin	< 1.0 EU per µg of the protein as determined by the LAL method.
Storage	Store at < -20°C, stable for 6 months. Please minimize freeze-thaw cycles.
Shipping	This product is provided as liquid. It is shipped at frozen temperature with blue ice/gel packs. Upon receipt, store it immediately at < - 20°C.
Formulation	Supplied as a 0.2 µm filtered solution of 20mM Tris-HCl, 150mM NaCl, pH 8.0.
Reconstitution	Not Applicable

Data



> 95 % as determined by reducing SDS-PAGE.

Background

Superoxide Dismutase (SOD2) belongs to the iron/manganese superoxide dismutase family. SOD2 is a mitochondrial matrix protein that forms a homotetramer and binds one manganese ion per subunit. SOD2 transforms toxic superoxide; a byproduct of the mitochondrial electron transport chain into hydrogen peroxide and diatomic oxygen. It is reported that oxidative stress plays an essential role in the development of breast cancer; while SOD2 is one of the primary enzymes that directly convert potential harmful oxidizing species to harmless metabolites.

For Research Use Only

A Reliable Research Partner in Life Science and Medicine

Toll-free: 1-888-852-8623

Web: www.elabscience.com

Tel: 1-832-243-6086

Email: techsupport@elabscience.com

Fax: 1-832-243-6017