

Recombinant Human SUMF1 Protein (His Tag)

Catalog Number:PKSH033084



Note: Centrifuge before opening to ensure complete recovery of vial contents.

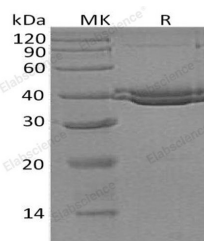
Description

Synonyms	Sulfatase-Modifying Factor 1;C-Alpha-Formylglycine-Generating Enzyme 1;SUMF1;FGE
Species	Human
Expression Host	HEK293 Cells
Sequence	Ser34-Asp374
Accession	Q8NBK3
Calculated Molecular Weight	38.4 kDa
Observed molecular weight	38-42 kDa
Tag	C-His

Properties

Purity	> 95 % as determined by reducing SDS-PAGE.
Endotoxin	< 1.0 EU per μ g of the protein as determined by the LAL method.
Storage	Store at -20°C , stable for 6 months. Please minimize freeze-thaw cycles.
Shipping	This product is provided as liquid. It is shipped at frozen temperature with blue ice/gel packs. Upon receipt, store it immediately at -20°C .
Formulation	Supplied as a $0.2\ \mu\text{m}$ filtered solution of 20mM Tris-HCl, 150mM NaCl, 2mM CaCl_2 , 10% Glycerol, pH 7.5.
Reconstitution	Not Applicable

Data



> 95 % as determined by reducing SDS-PAGE.

Background

Human Sulfatase Modifying Factor 1 (SUMF1) is a 42kDa protein. SUMF1 is a Ca^{2+} -binding member of the sulfatase-modifying factor family. SUMF1 is a soluble ER luminal glycoprotein, it converts inactive sulfatasases into an active form by transforming a catalytic site cysteine into a formylglycine residue. In the ER, SUMF1 can exist as either a monomer, or a disulfide-linked homodimer or a heterodimer with SUMF2. Three splice isoforms are known.

For Research Use Only

A Reliable Research Partner in Life Science and Medicine

Toll-free: 1-888-852-8623

Web: www.elabscience.com

Tel: 1-832-243-6086

Email: techsupport@elabscience.com

Fax: 1-832-243-6017