

# Recombinant Human SULT1C2 Protein (His Tag)

Catalog Number:PKSH033086



**Note:** Centrifuge before opening to ensure complete recovery of vial contents.

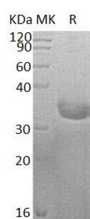
## Description

<b>Synonyms</b>	Sulfotransferase 1C2;ST1C2;Sulfotransferase 1C1;SULT1C#1;humSULTC2;SULT1C2;SULT1C1;
<b>Species</b>	Human
<b>Expression Host</b>	E.coli
<b>Sequence</b>	Met 1-Leu296
<b>Accession</b>	O00338
<b>Calculated Molecular Weight</b>	36.3 kDa
<b>Observed molecular weight</b>	30-37 kDa
<b>Tag</b>	N-His

## Properties

<b>Purity</b>	> 95 % as determined by reducing SDS-PAGE.
<b>Endotoxin</b>	< 1.0 EU per µg of the protein as determined by the LAL method.
<b>Storage</b>	Store at < -20°C, stable for 6 months. Please minimize freeze-thaw cycles.
<b>Shipping</b>	This product is provided as liquid. It is shipped at frozen temperature with blue ice/gel packs. Upon receipt, store it immediately at < - 20°C.
<b>Formulation</b>	Supplied as a 0.2 µm filtered solution of 20mM Tris-HCl, 100mM NaCl, pH 8.5.
<b>Reconstitution</b>	Not Applicable

## Data



> 95 % as determined by reducing SDS-PAGE.

## Background

Sulfotransferase 1C2 (SULT1C2) is a cytosolic enzyme member of the Sulfotransferase 1 family. Human SULT1C2 is primarily expressed in the adult stomach, kidney and thyroid gland, and in the fetal kidney and liver. SULT1C2 catalyzes the sulfate conjugation of drugs, xenobiotic compounds, hormones, and neurotransmitters. SULT1C2 may be involved in the activation of carcinogenic hydroxylamines. It shows activity towards p-nitrophenol and N-hydroxy-2-acetylaminofluorene (N-OH-2AAF).

## For Research Use Only

A Reliable Research Partner in Life Science and Medicine

Toll-free: 1-888-852-8623

Web: [www.elabscience.com](http://www.elabscience.com)

Tel: 1-832-243-6086

Email: [techsupport@elabscience.com](mailto:techsupport@elabscience.com)

Fax: 1-832-243-6017