

Recombinant Human YKT6 Protein (His Tag)

Catalog Number:PKSH033089



Note: Centrifuge before opening to ensure complete recovery of vial contents.

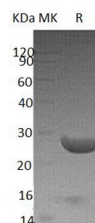
Description

Synonyms	Synaptobrevin homolog YKT6;YKT6
Species	Human
Expression Host	E.coli
Sequence	Met 1-Met 198
Accession	O15498
Calculated Molecular Weight	24.5 kDa
Observed molecular weight	28 kDa
Tag	N-His

Properties

Purity	> 95 % as determined by reducing SDS-PAGE.
Endotoxin	< 1.0 EU per µg of the protein as determined by the LAL method.
Storage	Store at < -20°C, stable for 6 months. Please minimize freeze-thaw cycles.
Shipping	This product is provided as liquid. It is shipped at frozen temperature with blue ice/gel packs. Upon receipt, store it immediately at < - 20°C.
Formulation	Supplied as a 0.2 µm filtered solution of 50mM Tris-HCl, pH 8.0.
Reconstitution	Not Applicable

Data



> 95 % as determined by reducing SDS-PAGE.

Background

Synaptobrevin Homolog YKT6 (YKT6) is an enzyme that belongs to the Synaptobrevin family. YKT6 contains a longin domain and a v-SNARE coiled-coil homology domain. YKT6 is highly conserved from yeast to human and it can functionally complement the loss of the yeast homolog in the yeast secretory pathway. It is a membrane associated, isoprenylated protein that functions at the endoplasmic reticulum-Golgi transport step. YKT6 is considered as one of the SNARE recognition molecules implicated in vesicular transport between secretory compartments.

For Research Use Only

A Reliable Research Partner in Life Science and Medicine

Toll-free: 1-888-852-8623

Web: www.elabscience.com

Tel: 1-832-243-6086

Email: techsupport@elabscience.com

Fax: 1-832-243-6017