

# Recombinant Human TRIM/TRAT1 Protein (His Tag)

Catalog Number:PKSH033097



**Note:** Centrifuge before opening to ensure complete recovery of vial contents.

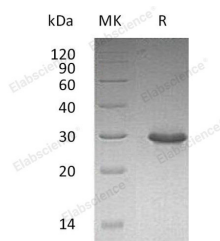
## Description

<b>Synonyms</b>	T-Cell Receptor-Associated Transmembrane Adapter 1;T-Cell Receptor-Interacting Molecule;TRIM;pp29/30;TRAT1;TCRIM;HSPC062
<b>Species</b>	Human
<b>Expression Host</b>	E.coli
<b>Sequence</b>	Asn29-Asn186
<b>Accession</b>	Q6PIZ9
<b>Calculated Molecular Weight</b>	19.4 kDa
<b>Observed molecular weight</b>	30 kDa
<b>Tag</b>	C-His

## Properties

<b>Purity</b>	> 95 % as determined by reducing SDS-PAGE.
<b>Endotoxin</b>	< 1.0 EU per µg of the protein as determined by the LAL method.
<b>Storage</b>	Store at < -20°C, stable for 6 months. Please minimize freeze-thaw cycles.
<b>Shipping</b>	This product is provided as liquid. It is shipped at frozen temperature with blue ice/gel packs. Upon receipt, store it immediately at < - 20°C.
<b>Formulation</b>	Supplied as a 0.2 µm filtered solution of 20mM Tris-HCl, 150mM NaCl, 1mM EDTA, 20% Glycerol, pH8.0.
<b>Reconstitution</b>	Not Applicable

## Data



> 95 % as determined by reducing SDS-PAGE.

## Background

T-Cell Receptor-Associated Transmembrane Adapter 1 (TRAT1) is a single-pass type III membrane protein. TRAT1 exists as a disulfide-linked homodimer and is strongly expressed in the thymus, and to a lesser extent in the spleen, lymph node, and peripheral blood lymphocytes. TRAT1 is phosphorylated on tyrosines by LCK or FYN upon TCR activation. Its function is to stabilize the TCR (T-cell antigen receptor)/CD3 complex at the surface of T-cells.

## For Research Use Only

A Reliable Research Partner in Life Science and Medicine

Toll-free: 1-888-852-8623

Web: [www.elabscience.com](http://www.elabscience.com)

Tel: 1-832-243-6086

Email: [techsupport@elabscience.com](mailto:techsupport@elabscience.com)

Fax: 1-832-243-6017