

Recombinant Human Testin/TES Protein (His Tag)

Catalog Number:PKSH033102



Note: Centrifuge before opening to ensure complete recovery of vial contents.

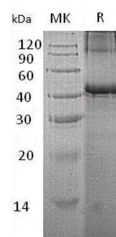
Description

Synonyms	Testin;TESS;TES
Species	Human
Expression Host	E.coli
Sequence	Met 1-Ser421
Accession	Q9UGI8
Calculated Molecular Weight	49.1 kDa
Observed molecular weight	50 kDa
Tag	C-His

Properties

Purity	> 95 % as determined by reducing SDS-PAGE.
Endotoxin	< 1.0 EU per μg of the protein as determined by the LAL method.
Storage	Store at -20°C , stable for 6 months. Please minimize freeze-thaw cycles.
Shipping	This product is provided as liquid. It is shipped at frozen temperature with blue ice/gel packs. Upon receipt, store it immediately at -20°C .
Formulation	Supplied as a $0.2\ \mu\text{m}$ filtered solution of PBS, 1mM DTT, 10% Glycerol, pH 7.5.
Reconstitution	Not Applicable

Data



> 95 % as determined by reducing SDS-PAGE.

Background

Testin belongs to the prickle/espinas/testin family. Testin contains three LIM zinc-binding domains and one PET domain, TES as a scaffold protein that may have a role in cell adhesion, cell spreading and in the reorganization of the actin cytoskeleton. In addition, TES can also as a tumor suppressor, inhibits tumor cell growth, regulate the cell proliferation. TES interacts with many cytoskeletal proteins, such as Zyxin, Mena, Actin, Talin and VASP. The ability of TES to associate with alpha-actin, Zyxin and paxillin is dependent on the conformational state of the molecule.

For Research Use Only

A Reliable Research Partner in Life Science and Medicine

Toll-free: 1-888-852-8623

Web: www.elabscience.com

Tel: 1-832-243-6086

Email: techsupport@elabscience.com

Fax: 1-832-243-6017