

# Recombinant Human TXNDC12/ERp18 Protein (His Tag)



Catalog Number:PKSH033106

**Note:** Centrifuge before opening to ensure complete recovery of vial contents.

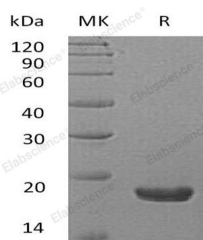
## Description

<b>Synonyms</b>	Thioredoxin Domain-Containing Protein 12;Endoplasmic Reticulum Resident Protein 18;ER Protein 18;ERp18;Endoplasmic Reticulum Resident Protein 19;ER Protein 19;ERp19;Thioredoxin-Like Protein p19;hTLP19;TXNDC12;TLP19
<b>Species</b>	Human
<b>Expression Host</b>	HEK293 Cells
<b>Sequence</b>	His27-Leu168
<b>Accession</b>	O95881
<b>Calculated Molecular Weight</b>	17.0 kDa
<b>Observed molecular weight</b>	18 kDa
<b>Tag</b>	C-His

## Properties

<b>Purity</b>	> 95 % as determined by reducing SDS-PAGE.
<b>Endotoxin</b>	< 1.0 EU per µg of the protein as determined by the LAL method.
<b>Storage</b>	Store at < -20°C, stable for 6 months. Please minimize freeze-thaw cycles.
<b>Shipping</b>	This product is provided as liquid. It is shipped at frozen temperature with blue ice/gel packs. Upon receipt, store it immediately at < - 20°C.
<b>Formulation</b>	Supplied as a 0.2 µm filtered solution of 20mM PB, 150mM NaCl, 10% Glycerol, pH 7.4.
<b>Reconstitution</b>	Not Applicable

## Data



> 95 % as determined by reducing SDS-PAGE.

## Background

Thioredoxin Domain-Containing Protein 12 belongs to the thioredoxin superfamily. In this family, proteins possess a thioredoxin fold with a consensus active-site sequence (CxxC) and have roles in redox regulation, defense against oxidative stress, refolding of disulfide-containing proteins, and regulation of transcription factors. TXNDC12 is widely expressed in many tissues and contains one thioredoxin domain.

## For Research Use Only

A Reliable Research Partner in Life Science and Medicine

Toll-free: 1-888-852-8623

Web: [www.elabscience.com](http://www.elabscience.com)

Tel: 1-832-243-6086

Email: [techsupport@elabscience.com](mailto:techsupport@elabscience.com)

Fax: 1-832-243-6017