

Recombinant Human MECR Protein (His Tag)

Catalog Number:PKSH033131



Note: Centrifuge before opening to ensure complete recovery of vial contents.

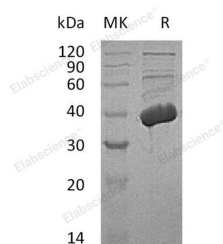
Description

Synonyms	Trans-2-Enoyl-CoA Reductase Mitochondrial;Nuclear Receptor-Binding Factor 1;HsNr1h-1NRBF-1;MECR;NBRF1
Species	Human
Expression Host	HEK293 Cells
Sequence	Pro54-Met373
Accession	AAH01419.1
Calculated Molecular Weight	35.7 kDa
Observed molecular weight	39 kDa
Tag	C-His

Properties

Purity	> 95 % as determined by reducing SDS-PAGE.
Endotoxin	< 1.0 EU per µg of the protein as determined by the LAL method.
Storage	Generally, lyophilized proteins are stable for up to 12 months when stored at -20 to -80°C. Reconstituted protein solution can be stored at 4-8°C for 2-7 days. Aliquots of reconstituted samples are stable at < -20°C for 3 months.
Shipping	This product is provided as lyophilized powder which is shipped with ice packs.
Formulation	Lyophilized from a 0.2 µm filtered solution of 20mM PB, 150mM NaCl, pH 7.4. Normally 5 % - 8 % trehalose, mannitol and 0.01 % Tween80 are added as protectants before lyophilization. Please refer to the specific buffer information in the printed manual
Reconstitution	Please refer to the printed manual for detailed information.

Data



> 95 % as determined by reducing SDS-PAGE.

Background

Trans-2-Enoyl-CoA Reductase Mitochondrial (MECR) belongs to the zinc-containing alcohol dehydrogenase family. MECR localizes to the mitochondrion. It is highly expressed in skeletal and heart muscle and expressed at lower levels in the placenta, liver, kidney and pancreas, with weakly or no expression in the lung. MECR exists as a homodimer, which catalyzes the reduction of trans-2-enoyl-CoA to acyl-CoA with chain length from C6 to C16 in an NADPH-dependent manner with preference to medium chain length substrate. MECR may take part in the mitochondrial synthesis of fatty acids.

For Research Use Only

A Reliable Research Partner in Life Science and Medicine

Toll-free: 1-888-852-8623

Web: www.elabscience.com

Tel: 1-832-243-6086

Email: techsupport@elabscience.com

Fax: 1-832-243-6017