

Recombinant Human Transaldolase/TALDO1 Protein (His Tag)

Catalog No. PKSH033132

Note: Centrifuge before opening to ensure complete recovery of vial contents.

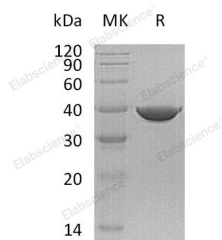
Description

Synonyms	Transaldolase;TALDO1;TAL;TALDO;TALDOR
Species	Human
Expression Host	HEK293 Cells
Sequence	Met 1-Lys337
Accession	P37837
Calculated Molecular Weight	38.6 kDa
Observed molecular weight	38 kDa
Tag	C-His
Bioactivity	Not validated for activity

Properties

Purity	> 95 % as determined by reducing SDS-PAGE.
Endotoxin	< 1.0 EU per µg of the protein as determined by the LAL method.
Storage	Store at < -20°C, stable for 6 months. Please minimize freeze-thaw cycles.
Shipping	This product is provided as liquid. It is shipped at frozen temperature with blue ice/gel packs. Upon receipt, store it immediately at < -20°C.
Formulation	Supplied as a 0.2 µm filtered solution of 20mM Tris-HCl, 10% Glycerol, pH 8.0.
Reconstitution	Not Applicable

Data



> 95 % as determined by reducing SDS-PAGE.

Background

Transaldolase (TALDO1) belongs to the transaldolase family of Type 1 subfamily. TALDO1 is expressed selectively in oligodendrocytes of the brain. TALDO1 is a key enzyme of the nonoxidative pentose phosphate pathway providing ribose-5-phosphate for nucleic acid synthesis and NADPH for lipid biosynthesis. This pathway can also maintain glutathione at a reduced state and thus protect sulfhydryl groups and cellular integrity from oxygen radicals. TALDO1 deficiency results in telangiectases of the skin, hepatosplenomegaly and enlarged clitoris.

For Research Use Only