

Recombinant Human TGFB2 Protein

Catalog No. PKSH033139

Note: Centrifuge before opening to ensure complete recovery of vial contents.

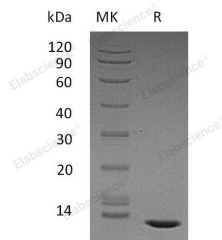
Description

Synonyms	Transforming growth factor beta-2;TGFB2;Polyergin;G-TSF;Glioblastoma-derived T-cell suppressor factor;Cetermin;BSC-1 cell growth inhibitor;TGF-beta-2
Species	Human
Expression Host	HEK293 Cells
Sequence	Ala303-Ser414
Accession	P61812
Calculated Molecular Weight	12.7 kDa
Observed molecular weight	12 kDa
Tag	None
Bioactivity	Measured by its ability to inhibit the IL-4-dependent proliferation of TF-1 cells. The ED50 for this effect is 30-180pg/ml.

Properties

Purity	> 95 % as determined by reducing SDS-PAGE.
Endotoxin	< 0.01 EU per µg of the protein as determined by the LAL method.
Storage	Generally, lyophilized proteins are stable for up to 12 months when stored at -20 to -80°C. Reconstituted protein solution can be stored at 4-8°C for 2-7 days. Aliquots of reconstituted samples are stable at < -20°C for 3 months.
Shipping	This product is provided as lyophilized powder which is shipped with ice packs.
Formulation	Lyophilized from a 0.2 µm filtered solution of 4mM HCl. Normally 5 % - 8 % trehalose, mannitol and 0.01% Tween80 are added as protectants before lyophilization. Please refer to the specific buffer information in the printed manual.
Reconstitution	Please refer to the printed manual for detailed information.

Data



> 95 % as determined by reducing SDS-PAGE.

Background

For Research Use Only

Transforming growth factor beta-2 (TGF- β 2) is a secreted protein which belongs to the TGF-beta family. It is known as a cytokine that performs many cellular functions and has a vital role during embryonic development. The precursor is cleaved into mature TGF-beta-2 and LAP, which remains non-covalently linked to mature TGF-beta-2 rendering it inactive. It is an extracellular glycosylated protein. It is known to suppress the effects of interleukin dependent T-cell tumors. Defects in TGFB2 may be a cause of non-syndromic aortic disease (NSAD).

For Research Use Only