

Recombinant Human Transthyretin/TTR Protein (His Tag)

Catalog No. PKSH033141

Note: Centrifuge before opening to ensure complete recovery of vial contents.

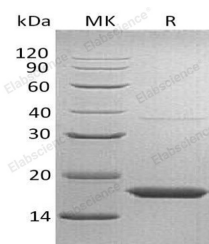
Description

Synonyms	Transthyretin;ATTR;Prealbumin;TBPA;TTR;PALB;CTS;CTS1;HEL111
Species	Human
Expression Host	HEK293 Cells
Sequence	Gly21-Glu147
Accession	P02766
Calculated Molecular Weight	14.8 kDa
Observed molecular weight	17&36 kDa
Tag	C-His
Bioactivity	Not validated for activity

Properties

Purity	> 95 % as determined by reducing SDS-PAGE.
Endotoxin	< 1.0 EU per µg of the protein as determined by the LAL method.
Storage	Generally, lyophilized proteins are stable for up to 12 months when stored at -20 to -80°C. Reconstituted protein solution can be stored at 4-8°C for 2-7 days. Aliquots of reconstituted samples are stable at < -20°C for 3 months.
Shipping	This product is provided as lyophilized powder which is shipped with ice packs.
Formulation	Lyophilized from a 0.2 µm filtered solution of 20mM Tris-HCl, 150mM NaCl, pH 8.0. Normally 5% - 8% trehalose, mannitol and 0.01% Tween 80 are added as protectants before lyophilization. Please refer to the specific buffer information in the printed manual.
Reconstitution	Please refer to the printed manual for detailed information.

Data



> 95 % as determined by reducing SDS-PAGE.

Background

Transthyretin is a secreted and cytoplasm protein which belongs to the Transthyretin family. Transthyretin is detected in

For Research Use Only

serum and cerebrospinal fluid (at protein level). It is highly expressed in choroid plexus epithelial cells. It is also detected in retina pigment epithelium and liver. Each monomer of Transthyretin has two 4-stranded beta sheets and the shape of a prolate ellipsoid. Antiparallel beta-sheet interactions link monomers into dimers. A short loop from each monomer forms the main dimer-dimer interaction. These two pairs of loops separate the opposed, convex beta-sheets of the dimers to form an internal channel. Defects in Transthyretin are the cause of amyloidosis type 1 (AMYL1) which is a hereditary generalized amyloidosis due to transthyretin amyloid deposition. Protein fibrils can form in different tissues leading to amyloid polyneuropathies, amyloidotic cardiomyopathy, carpal tunnel syndrome, systemic senile amyloidosis. The disease includes leptomeningeal amyloidosis that is characterized by primary involvement of the central nervous system.