

Recombinant Human PRSS22/BSSP-4 Protein (His Tag)

Catalog Number:PKSH033153



Note: Centrifuge before opening to ensure complete recovery of vial contents.

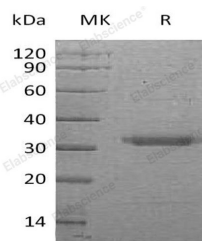
Description

Synonyms	Brain-Specific Serine Protease 4;BSSP-4;Serine Protease 22;Serine Protease 26;Trypsin Epsilon;PRSS22;BSSP4;PRSS26
Species	Human
Expression Host	HEK293 Cells
Sequence	Ala33-Ser317
Accession	Q9GZN4
Calculated Molecular Weight	31.6 kDa
Observed molecular weight	33-35 kDa
Tag	C-His

Properties

Purity	> 95 % as determined by reducing SDS-PAGE.
Endotoxin	< 1.0 EU per µg of the protein as determined by the LAL method.
Storage	Store at < -20°C, stable for 6 months. Please minimize freeze-thaw cycles.
Shipping	This product is provided as liquid. It is shipped at frozen temperature with blue ice/gel packs. Upon receipt, store it immediately at < - 20°C.
Formulation	Supplied as a 0.2 µm filtered solution of 20mM HAc-NaAc, 150mM NaCl, 10% Glycerol, pH 4.5.
Reconstitution	Not Applicable

Data



> 95 % as determined by reducing SDS-PAGE.

Background

Brain-Specific Serine Protease 4 (BSSP-4) is a serine protease that preferentially cleaves the synthetic substrate H-D-Leu-Thr-Arg-pNA compared to tosyl-Gly-Pro-Arg-pNA. BSSP-4 is expressed abundantly in the epithelial cells of the airways, including trachea, esophagus and fetal lung, but scarce in adult lung and expressed at low levels in placenta, pancreas, prostate and thyroid gland. BSSP-4 belongs to the peptidase S1 family and related to trypsin, referentially hydrolyzing substrates after arginine and lysine residues. However, BSSP-4 is less susceptible to inhibition by common trypsin inhibitors such as aprotinin, α 1-antitrypsin and secretory leukocyte protease inhibitor. BSSP-4 efficiently converts pro-urokinase- type plasminogen activator to its mature, active form.

For Research Use Only

A Reliable Research Partner in Life Science and Medicine

Toll-free: 1-888-852-8623

Web: www.elabscience.com

Tel: 1-832-243-6086

Email: techsupport@elabscience.com

Fax: 1-832-243-6017