

Recombinant Human TUBB4A Protein (His Tag)

Catalog No. PKSH033158

Note: Centrifuge before opening to ensure complete recovery of vial contents.

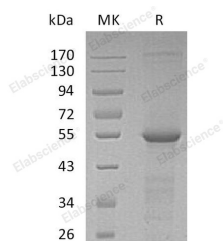
Description

Synonyms	Tubulin Beta-4A Chain;Tubulin 5 Beta;Tubulin Beta-4 Chain;TUBB4A;TUBB4;TUBB5
Species	Human
Expression Host	E.coli
Sequence	Met 1-Ala444
Accession	P04350
Calculated Molecular Weight	51.7 kDa
Observed molecular weight	58 kDa
Tag	N-His
Bioactivity	Not validated for activity

Properties

Purity	> 90 % as determined by reducing SDS-PAGE.
Endotoxin	< 1.0 EU per µg of the protein as determined by the LAL method.
Storage	Generally, lyophilized proteins are stable for up to 12 months when stored at -20 to -80°C. Reconstituted protein solution can be stored at 4-8°C for 2-7 days. Aliquots of reconstituted samples are stable at < -20°C for 3 months.
Shipping	This product is provided as lyophilized powder which is shipped with ice packs.
Formulation	Lyophilized from a 0.2 µm filtered solution of 20mM Histidine-HCl, 10% Trehalose, 100mM NaCl, 0.05% Tween 80, pH6.5. Normally 5% - 8% trehalose, mannitol and 0.01% Tween 80 are added as protectants before lyophilization. Please refer to the specific buffer information in the printed manual.
Reconstitution	Please refer to the printed manual for detailed information.

Data



> 90 % as determined by reducing SDS-PAGE.

Background

For Research Use Only

Tubulin Beta-4A Chain (TUBB4A) is a cytoplasmic peptide containing 444 amino acids. TUBB4A is a member of the Tubulin family. Tubulin is the major constituent of microtubules. Tubulin is a dimer composed of one alpha and one beta tubulin molecule; there are many forms of beta tubulins, Beta II and Beta IV Tubulin are ubiquitously expressed. Beta-III Tubulin, also known as Tubulin Beta-4, is regarded as a neuron-specific marker. It binds two moles of GTP, one at an exchangeable site on the beta chain and one at a non-exchangeable site on the alpha-chain.