

Recombinant Human TUBB4A Protein (His Tag)

Catalog Number:PKSH033158



Note: Centrifuge before opening to ensure complete recovery of vial contents.

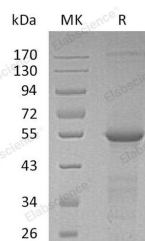
Description

| | |
|------------------------------------|--|
| Synonyms | Tubulin Beta-4A Chain;Tubulin 5 Beta;Tubulin Beta-4 Chain;TUBB4A;TUBB4;TUBB5 |
| Species | Human |
| Expression Host | E.coli |
| Sequence | Met 1-Ala444 |
| Accession | P04350 |
| Calculated Molecular Weight | 51.7 kDa |
| Observed molecular weight | 58 kDa |
| Tag | N-His |

Properties

| | |
|-----------------------|---|
| Purity | > 90 % as determined by reducing SDS-PAGE. |
| Endotoxin | < 1.0 EU per µg of the protein as determined by the LAL method. |
| Storage | Generally, lyophilized proteins are stable for up to 12 months when stored at -20 to -80°C. Reconstituted protein solution can be stored at 4-8°C for 2-7 days. Aliquots of reconstituted samples are stable at < -20°C for 3 months. |
| Shipping | This product is provided as lyophilized powder which is shipped with ice packs. |
| Formulation | Lyophilized from a 0.2 µm filtered solution of 20mM Histidine-HCl, 10% Trehalose, 100mM NaCl, 0.05% Tween 80, pH6.5. Normally 5 % - 8 % trehalose, mannitol and 0.01% Tween80 are added as protectants before lyophilization. Please refer to the speci |
| Reconstitution | Please refer to the printed manual for detailed information. |

Data



> 90 % as determined by reducing SDS-PAGE.

Background

Tubulin Beta-4A Chain (TUBB4A) is a cytoplasmic peptide containing 444 amino acids. TUBB4A is a member of the Tubulin family. Tubulin is the major constituent of microtubules. Tubulin is a dimer composed of one alpha and one beta tubulin molecule; there are many forms of beta tubulins, Beta II and Beta IV Tubulin are ubiquitously expressed. Beta-III Tubulin, also known as Tubulin Beta-4, is regarded as a neuron-specific marker. It binds two moles of GTP, one at an exchangeable site on the beta chain and one at a non-exchangeable site on the alpha-chain.

For Research Use Only

A Reliable Research Partner in Life Science and Medicine

Toll-free: 1-888-852-8623

Web: www.elabscience.com

Tel: 1-832-243-6086

Email: techsupport@elabscience.com

Fax: 1-832-243-6017