

Recombinant Human UBE2B/HR6B Protein

Catalog Number:PKSH033179



Note: Centrifuge before opening to ensure complete recovery of vial contents.

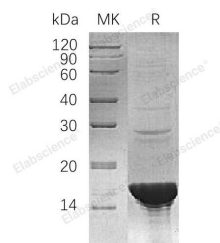
Description

Synonyms	Ubiquitin-Conjugating Enzyme E2 B;RAD6 Homolog B;HR6B;hHR6B;Ubiquitin Carrier Protein B;Ubiquitin-Conjugating Enzyme E2-17 kDa;Ubiquitin-Protein Ligase B;UBE2B;RAD6B
Species	Human
Expression Host	E.coli
Sequence	Met 1-Ser152
Accession	P63146
Calculated Molecular Weight	17.5 kDa
Observed molecular weight	18 kDa
Tag	None

Properties

Purity	> 95 % as determined by reducing SDS-PAGE.
Endotoxin	< 1.0 EU per µg of the protein as determined by the LAL method.
Storage	Store at < -20°C, stable for 6 months. Please minimize freeze-thaw cycles.
Shipping	This product is provided as liquid. It is shipped at frozen temperature with blue ice/gel packs. Upon receipt, store it immediately at < - 20°C.
Formulation	Supplied as a 0.2 µm filtered solution of 10mM HEPES, pH 7.5.
Reconstitution	Not Applicable

Data



> 95 % as determined by reducing SDS-PAGE.

Background

Ubiquitin-Conjugating Enzyme E2 B (UBE2B) belongs to the ubiquitin-conjugating enzyme family. UBE2B can catalyze the covalent attachment of ubiquitin to other proteins; and is essential for the multi-ubiquitination and degradation of N-end rule substrates. UBE2B is indispensability for postreplication repair of UV-damaged DNA and may be involved in neurite outgrowth. Additionally; UBE2B may have a role in sepsis-induced muscle protein proteolysis and cancer-induced cachexia.

For Research Use Only

A Reliable Research Partner in Life Science and Medicine

Toll-free: 1-888-852-8623

Web: www.elabscience.com

Tel: 1-832-243-6086

Email: techsupport@elabscience.com

Fax: 1-832-243-6017