

Recombinant Human UBE2B/HR6B Protein (His Tag)

Catalog Number:PKSH033180



Note: Centrifuge before opening to ensure complete recovery of vial contents.

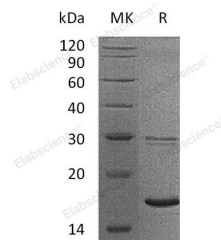
Description

| | |
|------------------------------------|---|
| Synonyms | Ubiquitin-Conjugating Enzyme E2 B;RAD6 Homolog B;HR6B;hHR6B;Ubiquitin Carrier Protein B;Ubiquitin-Conjugating Enzyme E2-17 kDa;Ubiquitin-Protein Ligase B;UBE2B;RAD6B |
| Species | Human |
| Expression Host | HEK293 Cells |
| Sequence | Met 1-Ser152 |
| Accession | P63146 |
| Calculated Molecular Weight | 18.3 kDa |
| Observed molecular weight | 17 kDa |
| Tag | C-His |

Properties

| | |
|-----------------------|--|
| Purity | > 95 % as determined by reducing SDS-PAGE. |
| Endotoxin | < 1.0 EU per µg of the protein as determined by the LAL method. |
| Storage | Store at < -20°C, stable for 6 months. Please minimize freeze-thaw cycles. |
| Shipping | This product is provided as liquid. It is shipped at frozen temperature with blue ice/gel packs. Upon receipt, store it immediately at < - 20°C. |
| Formulation | Supplied as a 0.2 µm filtered solution of 20mM PB, 150mM NaCl, pH 7.4. |
| Reconstitution | Not Applicable |

Data



> 95 % as determined by reducing SDS-PAGE.

Background

Ubiquitin-Conjugating Enzyme E2 B (UBE2B) is a member of the ubiquitin-conjugating enzyme family. UBE2B accepts ubiquitin from the E1 complex and catalyzes its covalent attachment to other proteins. It is shown that UBE2B interacts with RAD18; UBR2; and WAC. UBE2B is required for post-replicative DNA damage repair. Additionally; UBE2B plays a role in sepsis-induced muscle protein proteolysis and cancer-induced cachexia.

For Research Use Only

A Reliable Research Partner in Life Science and Medicine

Toll-free: 1-888-852-8623

Web: www.elabscience.com

Tel: 1-832-243-6086

Email: techsupport@elabscience.com

Fax: 1-832-243-6017