

Recombinant Human UBE2J2 Protein (GST Tag)

Catalog Number:PKSH033185



Note: Centrifuge before opening to ensure complete recovery of vial contents.

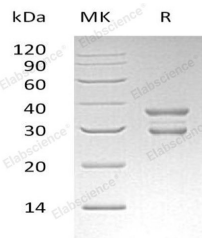
Description

Synonyms	Ubiquitin-Conjugating Enzyme E2 J2;Non-Canonical Ubiquitin-Conjugating Enzyme 2;NCUBE-2;UBE2J2;NCUBE2
Species	Human
Expression Host	E.coli
Sequence	Glu124-Arg224
Accession	Q8N2K1
Calculated Molecular Weight	38.0 kDa
Observed molecular weight	30&36 kDa
Tag	N-GST

Properties

Purity	> 95 % as determined by reducing SDS-PAGE.
Endotoxin	< 1.0 EU per µg of the protein as determined by the LAL method.
Storage	Store at < -20°C, stable for 6 months. Please minimize freeze-thaw cycles.
Shipping	This product is provided as liquid. It is shipped at frozen temperature with blue ice/gel packs. Upon receipt, store it immediately at < - 20°C.
Formulation	Supplied as a 0.2 µm filtered solution of 20mM PB, 150mM NaCl, 1mM DTT, pH 7.2.
Reconstitution	Not Applicable

Data



> 95 % as determined by reducing SDS-PAGE.

Background

Ubiquitin-Conjugating Enzyme E2 J2 (UBE2J2) belongs to the ubiquitin-conjugating enzyme family. UBE2J2 is involved in the ubiquitination. UBE2J2 located in the membrane of the endoplasmic reticulum, catalyzes the covalent attachment of ubiquitin to other proteins. UBE2J2 may play a important role in the selective degradation of misfolded membrane protein from the endoplasmic reticulum.

For Research Use Only

A Reliable Research Partner in Life Science and Medicine

Toll-free: 1-888-852-8623

Web: www.elabscience.com

Tel: 1-832-243-6086

Email: techsupport@elabscience.com

Fax: 1-832-243-6017