

Recombinant Human UBE2R2/UBC3B Protein (His Tag)

Catalog No. PKSH033188

Note: Centrifuge before opening to ensure complete recovery of vial contents.

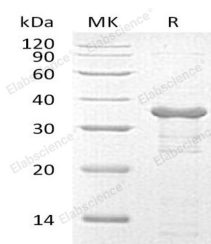
Description

Synonyms	Ubiquitin-Conjugating Enzyme E2 R2;Ubiquitin Carrier Protein R2;Ubiquitin-Conjugating Enzyme E2-CDC34B;Ubiquitin-Protein Ligase R2;UBE2R2;CDC34B;UBC3B
Species	Human
Expression Host	E.coli
Sequence	Met 1-Ser238
Accession	Q712K3
Calculated Molecular Weight	29.3 kDa
Observed molecular weight	37 kDa
Tag	N-His
Bioactivity	Not validated for activity

Properties

Purity	> 90 % as determined by reducing SDS-PAGE.
Endotoxin	< 1.0 EU per µg of the protein as determined by the LAL method.
Storage	Store at < -20°C, stable for 6 months. Please minimize freeze-thaw cycles.
Shipping	This product is provided as liquid. It is shipped at frozen temperature with blue ice/gel packs. Upon receipt, store it immediately at < - 20°C.
Formulation	Supplied as a 0.2 µm filtered solution of 50mm HEPES,150mM NaCl, pH 7.5.
Reconstitution	Not Applicable

Data



> 90 % as determined by reducing SDS-PAGE.

Background

Ubiquitin-Conjugating Enzyme E2 R2 (UBE2R2) is a modification enzyme that belongs to the ubiquitin-conjugating enzyme family. UBE2R2 is involved in cell growth and transformation. It accepts ubiquitin from the E1 complex and catalyzes its covalent attachment to other proteins. In vitro, UBE2R2 catalyzes monoubiquitination and 'Lys-48'-linked polyubiquitination. It may be involved in degradation of katenin.

For Research Use Only