

# Recombinant Human UBE2S Protein (GST Tag)

Catalog Number:PKSH033189



**Note:** Centrifuge before opening to ensure complete recovery of vial contents.

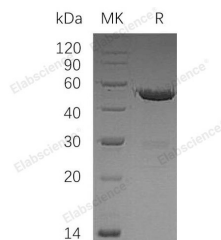
## Description

<b>Synonyms</b>	Ubiquitin-Conjugating Enzyme E2 S;E2-EPF;Ubiquitin Carrier Protein S;Ubiquitin-Conjugating Enzyme E2-24 kDa;Ubiquitin-Conjugating Enzyme E2-EPF5;Ubiquitin-Protein Ligase S;UBE2S;E2EPF
<b>Species</b>	Human
<b>Expression Host</b>	E.coli
<b>Sequence</b>	Met 1-Leu222
<b>Accession</b>	Q16763
<b>Calculated Molecular Weight</b>	50.1 kDa
<b>Observed molecular weight</b>	50 kDa
<b>Tag</b>	N-GST

## Properties

<b>Purity</b>	> 95 % as determined by reducing SDS-PAGE.
<b>Endotoxin</b>	< 1.0 EU per µg of the protein as determined by the LAL method.
<b>Storage</b>	Store at < -20°C, stable for 6 months. Please minimize freeze-thaw cycles.
<b>Shipping</b>	This product is provided as liquid. It is shipped at frozen temperature with blue ice/gel packs. Upon receipt, store it immediately at < - 20°C.
<b>Formulation</b>	Supplied as a 0.2 µm filtered solution of 50mM HEPES, 150mM NaCl, 2mM DTT, 10% Glycerol, pH 7.5.
<b>Reconstitution</b>	Not Applicable

## Data



> 95 % as determined by reducing SDS-PAGE.

## Background

Ubiquitin-Conjugating Enzyme E2 S (UBE2S) is a member of the Ubiquitin-Conjugating Enzyme family. UBE2S interacts with CDC20, FZR1/CDH1 and VHL. UBE2S can form a thiol ester linkage with Ubiquitin in an Ubiquitin Activating Enzyme-Dependent manner, a characteristic property of Ubiquitin Carrier Proteins. UBE2S acts as an essential factor of the Anaphase Promoting Complex/Cyclosome, a cell cycle-regulated Ubiquitin ligase that controls progression through mitosis. UBE2S is also involved in ubiquitination and subsequent degradation of VHL, resulting in an accumulation of HIF1A.

## For Research Use Only

A Reliable Research Partner in Life Science and Medicine

Toll-free: 1-888-852-8623

Web: [www.elabscience.com](http://www.elabscience.com)

Tel: 1-832-243-6086

Email: [techsupport@elabscience.com](mailto:techsupport@elabscience.com)

Fax: 1-832-243-6017