

Recombinant Human UBE2Z Protein (His Tag)

Catalog Number:PKSH033192



Note: Centrifuge before opening to ensure complete recovery of vial contents.

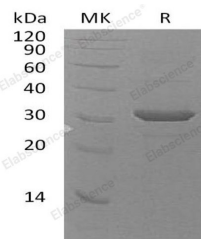
Description

Synonyms	Ubiquitin-Conjugating Enzyme E2 Z;Uba6-Specific E2 Conjugating Enzyme 1;Use1;Ubiquitin Carrier Protein Z;Ubiquitin-Protein Ligase Z;UBE2Z;HOYS7
Species	Human
Expression Host	E.coli
Sequence	Met 1-Val246
Accession	Q9H832-2
Calculated Molecular Weight	30.2 kDa
Observed molecular weight	32 kDa
Tag	N-His

Properties

Purity	> 90 % as determined by reducing SDS-PAGE.
Endotoxin	< 1.0 EU per µg of the protein as determined by the LAL method.
Storage	Store at < -20°C, stable for 6 months. Please minimize freeze-thaw cycles.
Shipping	This product is provided as liquid. It is shipped at frozen temperature with blue ice/gel packs. Upon receipt, store it immediately at < - 20°C.
Formulation	Supplied as a 0.2 µm filtered solution of 50mM HEPES, 50mM NaCl, pH 8.0.
Reconstitution	Not Applicable

Data



> 90 % as determined by reducing SDS-PAGE.

Background

Ubiquitin-Conjugating Enzyme E2 Z (ZUBE2Z) is a member of the E2 ubiquitin-conjugating enzyme family. ZUBE2Z is widely expressed in many tissues, with high expression found in the placenta, pancreas, spleen, and testis. It is ubiquitinates proteins that catalyze the covalent attachment of ubiquitin to other proteins. It has shown that ZUBE2Z participate in signaling pathways, and may be involved in apoptosis regulation.

For Research Use Only

A Reliable Research Partner in Life Science and Medicine

Toll-free: 1-888-852-8623

Web: www.elabscience.com

Tel: 1-832-243-6086

Email: techsupport@elabscience.com

Fax: 1-832-243-6017