

Recombinant Human LMAN2L Protein (His Tag)

Catalog Number:PKSH033213



Note: Centrifuge before opening to ensure complete recovery of vial contents.

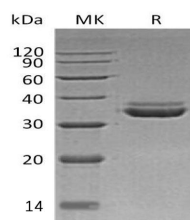
Description

Synonyms	VIP36-like protein;Lectin mannose-binding 2-like;LMAN2-like protein;VIPL
Species	Human
Expression Host	HEK293 Cells
Sequence	Ser19-Ala313
Accession	Q9H0V9
Calculated Molecular Weight	34.4 kDa
Observed molecular weight	30-40 kDa
Tag	C-His

Properties

Purity	> 95 % as determined by reducing SDS-PAGE.
Endotoxin	< 1.0 EU per µg of the protein as determined by the LAL method.
Storage	Generally, lyophilized proteins are stable for up to 12 months when stored at -20 to -80°C. Reconstituted protein solution can be stored at 4-8°C for 2-7 days. Aliquots of reconstituted samples are stable at < -20°C for 3 months.
Shipping	This product is provided as lyophilized powder which is shipped with ice packs.
Formulation	Lyophilized from a 0.2 µm filtered solution of 20mM PB, 150mM NaCl, pH 7.2. Normally 5 % - 8 % trehalose, mannitol and 0.01% Tween80 are added as protectants before lyophilization. Please refer to the specific buffer information in the printed man
Reconstitution	Please refer to the printed manual for detailed information.

Data



> 95 % as determined by reducing SDS-PAGE.

Background

VIP36-like protein (LMAN2L) is a single-pass type I membrane protein and contains 1 L-type lectin-like domain. It is highly expressed in skeletal muscle and kidney, and its intermediate expression levels in heart, liver and placenta, low levels in brain, thymus, spleen, small intestine and lung. LMAN2L may be involved in the regulation of export from the endoplasmic reticulum of a subset of glycoproteins. It also may function as a regulator of ERGIC-53.

For Research Use Only

A Reliable Research Partner in Life Science and Medicine

Toll-free: 1-888-852-8623

Web: www.elabscience.com

Tel: 1-832-243-6086

Email: techsupport@elabscience.com

Fax: 1-832-243-6017