

Recombinant Human WFDC2/HE4 Protein (His Tag)

Catalog Number:PKSH033224



Note: Centrifuge before opening to ensure complete recovery of vial contents.

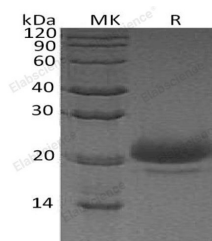
Description

Synonyms	WAP Four-Disulfide Core Domain Protein 2;Epididymal Secretory Protein E4;Major Epididymis-Specific Protein E4;Putative Protease Inhibitor WAP5;WFDC2;HE4;WAP5
Species	Human
Expression Host	HEK293 Cells
Sequence	Glu31-Phe124
Accession	Q14508
Calculated Molecular Weight	11.1 kDa
Observed molecular weight	18-22 kDa
Tag	C-His

Properties

Purity	> 95 % as determined by reducing SDS-PAGE.
Endotoxin	< 1.0 EU per µg of the protein as determined by the LAL method.
Storage	Generally, lyophilized proteins are stable for up to 12 months when stored at -20 to -80°C. Reconstituted protein solution can be stored at 4-8°C for 2-7 days. Aliquots of reconstituted samples are stable at < -20°C for 3 months.
Shipping	This product is provided as lyophilized powder which is shipped with ice packs.
Formulation	Lyophilized from a 0.2 µm filtered solution of 20mM PB, 150mM NaCl, pH 7.2. Normally 5 % - 8 % trehalose, mannitol and 0.01% Tween80 are added as protectants before lyophilization. Please refer to the specific buffer information in the printed manual
Reconstitution	Please refer to the printed manual for detailed information.

Data



> 95 % as determined by reducing SDS-PAGE.

Background

WAP Four-Disulfide Core Domain Protein 2 (WFDC2) is a 25 kDa secreted glycoprotein containing two WAP domains. Mature human WFDC2 is 94 amino acids (aa) in length. It contains two WAP domains that likely mediate antiprotease and/or antimicrobial activity (aa 31 - 73 and 74 - 123). There are four potential splice variants. One shows a deletion of aa 27-74, while three others show aa substitutions: 28 aa for aa 75-124, 23 aa for aa 1 - 74, and 10 aa for aa 71-124. WFDC2 is a member of a family of stable 4-disulfide core proteins that are secreted at high levels. It is expressed by a wide variety of epithelial cells, including respiratory epithelium, salivary gland mucous cells, breast duct epithelium, distal tubule renal

For Research Use Only

A Reliable Research Partner in Life Science and Medicine

Toll-free: 1-888-852-8623

Web: www.elabscience.com

Tel: 1-832-243-6086

Email: techsupport@elabscience.com

Fax: 1-832-243-6017

Recombinant Human WFDC2/HE4 Protein (His Tag)

Catalog Number:PKSH033224



epithelium, and epididymal epithelium. WFDC2 may be a component of the innate immune defences of the lung, nasal and oral cavities and suggest that WFDC2 functions in concert with related WAP domain containing proteins in epithelial host defence. WFDC2 re-expression in lung carcinomas may prove to be associated with tumour type and should be studied in further detail. Mammary gland expression of tammor WFDC2 during the course of lactation showed WFDC2 was elevated during pregnancy, reduced in early lactation and absent in mid-late lactation. WFDC2 can undergo a complex series of alternative splicing events that can potentially yield five distinct WAP domain containing protein isoforms.

For Research Use Only

A Reliable Research Partner in Life Science and Medicine

Toll-free: 1-888-852-8623

Tel: 1-832-243-6086

Fax: 1-832-243-6017

Web: www.elabscience.com

Email: techsupport@elabscience.com