

Recombinant Human Wnt Inhibitory Factor 1/WIF1 Protein (His Tag)



Catalog Number:PKSH033225

Note: Centrifuge before opening to ensure complete recovery of vial contents.

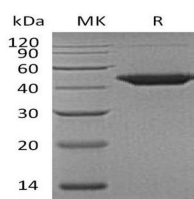
Description

Synonyms	Wnt Inhibitory Factor 1;WIF-1;WIF1
Species	Human
Expression Host	HEK293 Cells
Sequence	Gly29-Trp379
Accession	AAH18037.1
Calculated Molecular Weight	39.5 kDa
Observed molecular weight	45 kDa
Tag	C-His

Properties

Purity	> 95 % as determined by reducing SDS-PAGE.
Endotoxin	< 1.0 EU per µg of the protein as determined by the LAL method.
Storage	Generally, lyophilized proteins are stable for up to 12 months when stored at -20 to -80°C. Reconstituted protein solution can be stored at 4-8°C for 2-7 days. Aliquots of reconstituted samples are stable at < -20°C for 3 months.
Shipping	This product is provided as lyophilized powder which is shipped with ice packs.
Formulation	Lyophilized from a 0.2 µm filtered solution of 10mM HAc-NaAc, 150mM NaCl, 0.5% CHAPS, pH 4.0. Normally 5 % - 8 % trehalose, mannitol and 0.01 % Tween80 are added as protectants before lyophilization. Please refer to the specific buffer information
Reconstitution	Please refer to the printed manual for detailed information.

Data



> 95 % as determined by reducing SDS-PAGE.

Background

Wnt Inhibitory Factor 1 (WIF1) is a secreted protein, which binds WNT proteins and inhibits their activities. WNT proteins are extracellular signaling molecules involved in the control of embryonic development. WIF1 contains a WNT inhibitory factor (WIF) domain and 5 epidermal growth factor (EGF)-like domains. is found to be present in fish, amphibia and mammals. WIF1 is a recurrent target in human salivary gland oncogenesis. WIF1 may be involved in mesoderm segmentation. WIF1 is a tumor suppressor, specifically in nonfunctioning pituitary tumors.

For Research Use Only

A Reliable Research Partner in Life Science and Medicine

Toll-free: 1-888-852-8623

Web: www.elabscience.com

Tel: 1-832-243-6086

Email: techsupport@elabscience.com

Fax: 1-832-243-6017