

Recombinant Human WBP1 Protein (His Tag)

Catalog No. PKSH033226

Note: Centrifuge before opening to ensure complete recovery of vial contents.

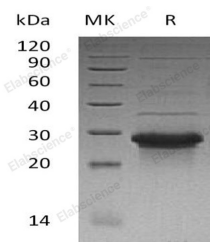
Description

Synonyms	WW Domain-Binding Protein 1;WBP-1;WBP1
Species	Human
Expression Host	E.coli
Sequence	Gly170-Pro269
Accession	Q96G27
Calculated Molecular Weight	12.6 kDa
Observed molecular weight	20 kDa
Tag	N-His
Bioactivity	Not validated for activity

Properties

Purity	> 90 % as determined by reducing SDS-PAGE.
Endotoxin	< 1.0 EU per µg of the protein as determined by the LAL method.
Storage	Generally, lyophilized proteins are stable for up to 12 months when stored at -20 to -80°C. Reconstituted protein solution can be stored at 4-8°C for 2-7 days. Aliquots of reconstituted samples are stable at < -20°C for 3 months.
Shipping	This product is provided as lyophilized powder which is shipped with ice packs.
Formulation	Lyophilized from a 0.2 µm filtered solution of 20mM PB, 150mM NaCl, pH 7.2. Normally 5% - 8% trehalose, mannitol and 0.01% Tween 80 are added as protectants before lyophilization. Please refer to the specific buffer information in the printed manual.
Reconstitution	Please refer to the printed manual for detailed information.

Data



> 90 % as determined by reducing SDS-PAGE.

Background

WW Domain-Binding Protein 1 (WBP1) is widely expressed in many tissues, but it is lowly expressed in the lung, placenta, kidney, and liver. WBP1 contains two WW-binding motifs: WW-binding 1 and WW-binding 2 that are involved

For Research Use Only

in mediating protein-protein interactions through the binding of polyproline ligands. The WW-binding domain is composed of 38 to 40 semi-conserved amino acids shared by proteins with diverse functions including structural, regulatory, and signaling proteins. In addition, WBP1 also encodes a ligand of the WW domain of the Yes kinase-associated protein. This function has not been determined.