

Recombinant Human XPNPEP1 Protein (His Tag)

Catalog Number:PKSH033228



Note: Centrifuge before opening to ensure complete recovery of vial contents.

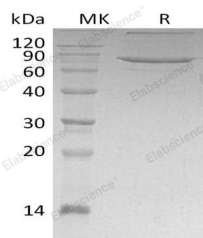
Description

Synonyms	Xaa-Pro Aminopeptidase 1;Aminoacylproline Aminopeptidase;Cytosolic Aminopeptidase P;Soluble Aminopeptidase P;sAmp;X-Pro Aminopeptidase 1;X-Prolyl Aminopeptidase 1 Soluble;XPNPEP1;XPNPEPL;XPNPEPL1
Species	Human
Expression Host	E.coli
Sequence	Pro2-His623
Accession	Q9NQW7
Calculated Molecular Weight	70.6 kDa
Observed molecular weight	69-85 kDa
Tag	C-His

Properties

Purity	> 85 % as determined by reducing SDS-PAGE.
Endotoxin	< 1.0 EU per µg of the protein as determined by the LAL method.
Storage	Store at < -20°C, stable for 6 months. Please minimize freeze-thaw cycles.
Shipping	This product is provided as liquid. It is shipped at frozen temperature with blue ice/gel packs. Upon receipt, store it immediately at < - 20°C.
Formulation	Supplied as a 0.2 µm filtered solution of 20mM PB, 8% Sucrose, 100mM NaCl, 10% Glycerol, 0.05% Tween80, 0.02% Tween20, pH 7.5.
Reconstitution	Not Applicable

Data



> 85 % as determined by reducing SDS-PAGE.

Background

X-Prolyl Aminopeptidase (XPNPEP1) is a proline-specific metalloaminopeptidase that specifically catalyzes the removal of any unsubstituted N-terminal amino acid that is adjacent to a penultimate proline residue. Because of its specificity toward proline, it has been suggested that X-Prolyl Aminopeptidase is important in the maturation and degradation of peptide hormones, neuropeptides, and tachykinins, as well as in the digestion of otherwise resistant dietary protein fragments, thereby complementing the pancreatic peptidases. X-Prolyl Aminopeptidase is a member of the M24 family of metalloproteases, which also contains methionine aminopeptidases, X-Pro dipeptidase, aminopeptidase P2, aminopeptidase P homolog, proliferation-associated protein 1, and suppressor of Ty homolog or chromatin-specific transcription elongation factor large subunit. It is a soluble enzyme, in contrast to the GPI-anchored Aminopeptidase P2 encoded by XPNPEP2. Deficiency of X-Prolyl Aminopeptidase results in excretion of large amounts of imino-

For Research Use Only

A Reliable Research Partner in Life Science and Medicine

Toll-free: 1-888-852-8623

Web: www.elabscience.com

Tel: 1-832-243-6086

Email: techsupport@elabscience.com

Fax: 1-832-243-6017

Recombinant Human XPNPEP1 Protein (His Tag)

Catalog Number:PKSH033228



oligopeptides in urine. Human Aminopeptidase P1 is widely expressed. The amino acid sequence of human X-Prolyl Aminopeptidase is 99%, 97%, 95%, 74% and 73% identical to that of canine, bovine, mouse/rat, Xenopus and zebrafish, respectively.

For Research Use Only

A Reliable Research Partner in Life Science and Medicine

Toll-free: 1-888-852-8623

Tel: 1-832-243-6086

Fax: 1-832-243-6017

Web: www.elabscience.com

Email: techsupport@elabscience.com