

Recombinant Human XPNPEP3 Protein (His Tag)

Catalog No. PKSH033229

Note: Centrifuge before opening to ensure complete recovery of vial contents.

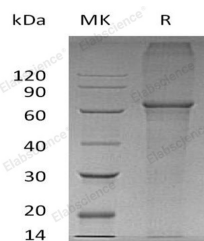
Description

Synonyms	Probable Xaa-Pro Aminopeptidase 3;X-Pro Aminopeptidase 3;Aminopeptidase P3;APP3;XPNPEP3
Species	Human
Expression Host	E.coli
Sequence	Met 1-Ser507
Accession	Q9NQH7
Calculated Molecular Weight	60.2 kDa
Observed molecular weight	65 kDa
Tag	N-His & C-His
Bioactivity	Not validated for activity

Properties

Purity	> 95 % as determined by reducing SDS-PAGE.
Endotoxin	< 1.0 EU per µg of the protein as determined by the LAL method.
Storage	Store at < -20°C, stable for 6 months. Please minimize freeze-thaw cycles.
Shipping	This product is provided as liquid. It is shipped at frozen temperature with blue ice/gel packs. Upon receipt, store it immediately at < -20°C.
Formulation	Supplied as a 0.2 µm filtered solution of 25mM Tris, 1mM DTT, pH 7.3.
Reconstitution	Not Applicable

Data



> 95 % as determined by reducing SDS-PAGE.

Background

Probable Xaa-Pro Aminopeptidase 3 (XPNPEP3) is a member of the peptidase M24B family. XPNPEP3 has two isoforms and both are widely expressed. XPNPEP3 is localized in the Mitochondrion. XPNPEP3 catalyzes the release of any N-terminal amino acid, including proline, that is linked to proline, even from a dipeptide or tripeptide. Defects in XPNPEP3 are the cause of nephronophthisis-like nephropathy type 1 which is a disorder with features of nephronophthisis, a cystic kidney disease leading to end-stage renal failure.

For Research Use Only