

## Recombinant Human ZBED1 Protein (His Tag)

Catalog No. PKSH033233

**Note:** Centrifuge before opening to ensure complete recovery of vial contents.

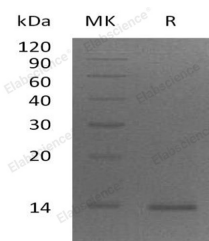
### Description

|                                    |  |
|------------------------------------|--|
| <b>Synonyms</b>                    | Zinc Finger BED Domain-Containing Protein 1; Putative Ac-Like Transposable Element; dREF Homolog; ZBED1; ALTE; DREF; KIAA0785; TRAMP |
| <b>Species</b>                     | Human  |
| <b>Expression Host</b>             | E.coli   |
| <b>Sequence</b>                    | Asn3-Glu100  |
| <b>Accession</b>                   | O96006   |
| <b>Calculated Molecular Weight</b> | 12.5 kDa   |
| <b>Observed molecular weight</b>   | 14 kDa   |
| <b>Tag</b>                         | C-His  |
| <b>Bioactivity</b>                 | Not validated for activity   |

### Properties

|                       |   |
|-----------------------|---|
| <b>Purity</b>         | > 95 % as determined by reducing SDS-PAGE.  |
| <b>Endotoxin</b>      | < 1.0 EU per µg of the protein as determined by the LAL method.   |
| <b>Storage</b>        | Generally, lyophilized proteins are stable for up to 12 months when stored at -20 to -80°C. Reconstituted protein solution can be stored at 4-8°C for 2-7 days. Aliquots of reconstituted samples are stable at < -20°C for 3 months.             |
| <b>Shipping</b>       | This product is provided as lyophilized powder which is shipped with ice packs.   |
| <b>Formulation</b>    | Lyophilized from a 0.2 µm filtered solution of PBS, pH 7.4.<br>Normally 5 % - 8 % trehalose, mannitol and 0.01% Tween80 are added as protectants before lyophilization.<br>Please refer to the specific buffer information in the printed manual. |
| <b>Reconstitution</b> | Please refer to the printed manual for detailed information.  |

### Data



> 95 % as determined by reducing SDS-PAGE.

### Background

Zinc Finger BED Domain-Containing Protein 1 (ZBED1) contains one BED-type zinc finger and is found in the cell

### For Research Use Only

nucleus. ZBED1 is widely expressed, highly in heart, skeletal muscle, spleen and placenta. The expression of ZBED1 is usually linked to the cell cycle. During the G1/S phase, the expression is increasing. During the S/G2 phase, the expression reaches to the highest, and then decreasing. ZBED1 exists in homodimer forms, which can bind to 5'-TGTCCG[CT]GA[CT]A-3' DNA elements, that can be found in the promoter regions of a number of gene related to cell proliferation.