

Recombinant Human CRYAB Protein (His Tag)

Catalog No. PKSH033245

Note: Centrifuge before opening to ensure complete recovery of vial contents.

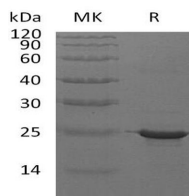
Description

Synonyms	Alpha-Crystallin B Chain;Alpha(B)-Crystallin;Heat Shock Protein Beta-5;HspB5;Renal Carcinoma Antigen NY-REN-27;Rosenthal Fiber Component;CRYAB;CRYA2
Species	Human
Expression Host	E.coli
Sequence	Met 1-Lys175
Accession	P02511
Calculated Molecular Weight	21.2 kDa
Observed molecular weight	25 kDa
Tag	C-His
Bioactivity	Not validated for activity

Properties

Purity	> 95 % as determined by reducing SDS-PAGE.
Endotoxin	< 1.0 EU per µg of the protein as determined by the LAL method.
Storage	Generally, lyophilized proteins are stable for up to 12 months when stored at -20 to -80°C. Reconstituted protein solution can be stored at 4-8°C for 2-7 days. Aliquots of reconstituted samples are stable at < -20°C for 3 months.
Shipping	This product is provided as lyophilized powder which is shipped with ice packs.
Formulation	Lyophilized from a 0.2 µm filtered solution of PBS, pH 7.4. Normally 5 % - 8 % trehalose, mannitol and 0.01% Tween80 are added as protectants before lyophilization. Please refer to the specific buffer information in the printed manual.
Reconstitution	Please refer to the printed manual for detailed information.

Data



> 95 % as determined by reducing SDS-PAGE.

Background

For Research Use Only

α Crystallin B Chain (CRYAB) is a cytoplasmic protein that belongs to the small heat shock protein (HSP20) family. Alpha crystallins are composed of two gene products: alpha-A and alpha-B, for acidic and basic, respectively. Alpha crystallins can be induced by heat shock and are members of the small heat shock protein (sHSP also known as the HSP20) family. Alpha crystallins acts as molecular chaperones and hold them in in large soluble aggregates. CRYAB is expressed widely in many tissues and organs. It may contribute to the transparency and refractive index of the lens. The deficiency of CRYAB is the cause of myopathy myofibrillar type 2 (MFM2) and cataract posterior polar type 2 (CTPP2).