

Recombinant Human beta Amylase/AMY2 Protein (His Tag)



Catalog Number:PKSH033247

Note: Centrifuge before opening to ensure complete recovery of vial contents.

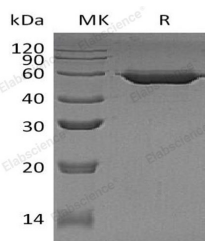
Description

Synonyms	Alpha-amylase 2B;1,4-alpha-D-glucan glucanohydrolase 2B;Carcinoid alpha-amylase;HXA;AMY2;AMY3
Species	Human
Expression Host	HEK293 Cells
Sequence	Gln16-Leu511
Accession	P19961
Calculated Molecular Weight	56.9 kDa
Observed molecular weight	50-60 kDa
Tag	C-His

Properties

Purity	> 95 % as determined by reducing SDS-PAGE.
Endotoxin	< 1.0 EU per µg of the protein as determined by the LAL method.
Storage	Store at < -20°C, stable for 6 months. Please minimize freeze-thaw cycles.
Shipping	This product is provided as liquid. It is shipped at frozen temperature with blue ice/gel packs. Upon receipt, store it immediately at < - 20°C.
Formulation	Supplied as a 0.2 µm filtered solution of 20mM Tris-HCl, pH 8.0.
Reconstitution	Not Applicable

Data



> 95 % as determined by reducing SDS-PAGE.

Background

Alpha-amylase 2B is an enzyme that in humans is encoded by the AMY2B gene. Alpha-amylase 2B is a secreted protein and belongs to the glycosyl hydrolase 13 family. It hydrolyzes 1,4-alpha-glucoside bonds in oligosaccharides and polysaccharides, and thus catalyze the first step in digestion of dietary starch and glycogen. The human genome has a cluster of several amylase genes that are expressed at high levels in either salivary gland or pancreas. This gene encodes an amylase isoenzyme produced by the pancreas. Diseases associated with AMY2B include pancreatitis, and thyroiditis, and among its related super-pathways are Metabolic pathways and MPS IIIC - Sanfilippo syndrome C.

For Research Use Only

A Reliable Research Partner in Life Science and Medicine

Toll-free: 1-888-852-8623

Web: www.elabscience.com

Tel: 1-832-243-6086

Email: techsupport@elabscience.com

Fax: 1-832-243-6017