

# Recombinant Human CRYAA Protein (His Tag)

Catalog Number:PKSH033248



**Note:** Centrifuge before opening to ensure complete recovery of vial contents.

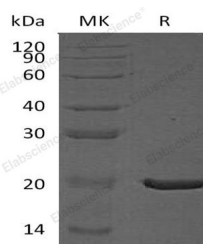
## Description

<b>Synonyms</b>	Alpha-Crystallin A Chain;Heat Shock Protein Beta-4;HspB4;Alpha-Crystallin A Chain;Short Form;CRYAA;CRYA1;HSPB4
<b>Species</b>	Human
<b>Expression Host</b>	E.coli
<b>Sequence</b>	Met 1-Ser173
<b>Accession</b>	P02489
<b>Calculated Molecular Weight</b>	20.9 kDa
<b>Observed molecular weight</b>	20 kDa
<b>Tag</b>	C-His

## Properties

<b>Purity</b>	> 90 % as determined by reducing SDS-PAGE.
<b>Endotoxin</b>	< 1.0 EU per µg of the protein as determined by the LAL method.
<b>Storage</b>	Generally, lyophilized proteins are stable for up to 12 months when stored at -20 to -80°C. Reconstituted protein solution can be stored at 4-8°C for 2-7 days. Aliquots of reconstituted samples are stable at < -20°C for 3 months.
<b>Shipping</b>	This product is provided as lyophilized powder which is shipped with ice packs.
<b>Formulation</b>	Lyophilized from a 0.2 µm filtered solution of PBS, 2mM EDTA, pH 8.0. Normally 5 % - 8 % trehalose, mannitol and 0.01% Tween80 are added as protectants before lyophilization. Please refer to the specific buffer information in the printed manual.
<b>Reconstitution</b>	Please refer to the printed manual for detailed information.

## Data



> 90 % as determined by reducing SDS-PAGE.

## Background

Alpha-Crystallin A Chain (CRYAA) belongs to the small heat shock protein (HSP20) family and can be induced by heat shock. The expression of CRYAA is preferentially restricted to the lens cell. CRYAA may contribute to the transparency and refractive index of the lens. CRYAA has chaperone-like activity, preventing aggregation of various proteins under a wide range of stress conditions. Two additional functions of CRYAA are an autokinase activity and participation in the intracellular architecture.

## For Research Use Only

A Reliable Research Partner in Life Science and Medicine

Toll-free: 1-888-852-8623

Web: [www.elabscience.com](http://www.elabscience.com)

Tel: 1-832-243-6086

Email: [techsupport@elabscience.com](mailto:techsupport@elabscience.com)

Fax: 1-832-243-6017