

Recombinant Human α -Lactalbumin/LALBA Protein (His Tag)

Catalog No. PKSH033250

Note: Centrifuge before opening to ensure complete recovery of vial contents.

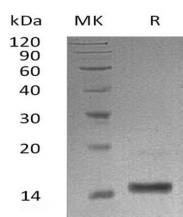
Description

Synonyms	Lactose synthase B protein;Lysozyme-like protein 7;LALBA;LYZL7
Species	Human
Expression Host	HEK293 Cells
Sequence	Lys20-Leu142
Accession	P00709
Calculated Molecular Weight	15.1 kDa
Observed molecular weight	14-16 kDa
Tag	C-His
Bioactivity	Not validated for activity

Properties

Purity	> 95 % as determined by reducing SDS-PAGE.
Endotoxin	< 1.0 EU per μ g of the protein as determined by the LAL method.
Storage	Store at < -20°C, stable for 6 months. Please minimize freeze-thaw cycles.
Shipping	This product is provided as liquid. It is shipped at frozen temperature with blue ice/gel packs. Upon receipt, store it immediately at < -20°C.
Formulation	Supplied as a 0.2 μ m filtered solution of 20mM Tris-HCl, 150mM NaCl, pH 8.0.
Reconstitution	Not Applicable

Data



> 95 % as determined by reducing SDS-PAGE.

Background

Alpha-lactalbumin(LALBA) is a secreted protein that is a member of the glycosyl hydrolase 22 family.It is expressed in mammary gland in milk. It is the regulatory subunit of lactose synthase.It changes the substrate specificity of galactosyltransferase in the mammary gland making glucose a good acceptor substrate for this enzyme.

For Research Use Only